

Bromsgrove Partnership **Your District Your Future**



Bromsgrove Partnership **Annual Report**

2008/2009

Bromsgrove
Your District Your Future Partnership

CONTENTS

	PAGE
1. Foreword	3
2. Executive Summary	4
3. About the District	6
4. Local Strategic Partnership Performance in 2008/09	10
4.1 Local Area Agreement	10
4.2 Communities that are Safe and Feel Safe	11
4.3 Better Environment for Today and Tomorrow	18
4.4 Economic Success Shared by All	22
4.5 Town Centre Redevelopment	23
4.6 Longbridge Regeneration	27
4.7 Improving Health and Well Being	29
4.8 Meeting the needs of Children and Young People	34
4.9 Stronger Communities	36
4.10 Older People	37
4.11 Housing	39
4.12 Transport	41
4.13 Other LSP Groups	44
4.14 Compact Steering Group	44
4.15 Communications (including Community Engagement)	48
5. What next for the Bromsgrove Partnership?	51
6. Glossary	52

APPENDICES

Appendix 1: Structure Aligned to LAA Themes	54
Appendix 2: Sustainable Community Strategy High Level Action Plans showing performance during 2008/09	55
Further Information	119

1. Foreword

Welcome to the third annual report of the Bromsgrove Partnership, covering the period April 2008 to March 2009.

At the Bromsgrove Partnership Away Day in February 2007, the Partnership Board members considered local evidence and national priorities on each of the Local Area Agreement (LAA) blocks. As a result, the following priorities were determined and subsequently approved by the Board on 1st March 2007 and subsequently approved by Full Council. They remained priorities for 2008/09:

- Fear of Crime
- Environment
- Town Centre redevelopment
- Longbridge regeneration
- Health and Well Being
- Children and Young People
- Older People
- Housing
- Transport

The agreed priorities fit within, and contribute to, the 6 blocks of the LAA. For further information about the LAA, and the Bromsgrove Partnership's contribution to it, please refer to the Bromsgrove Partnership's Sustainable Community Strategy.

The Board feels that it can really add value in delivering less established priorities and the actions to support them, and therefore, at the same Away Day, selected the following 3 priorities as its particular focus:

- Bromsgrove town centre redevelopment;
- Longbridge regeneration; and
- Affordable housing.

The performance management and monitoring arrangements, during this time were the Key Performance Indicators and a Community Improvement Plan. You will see in Section 3 of this report the progress made by each of the Theme Groups during the year.

Mark Weaver, who became Chairman in 2005, stepped down at the end of 2008 and we would like to thank him for his valuable contribution.

With a new Chairman and Vice-Chairman, the Partnership continues to grow and develop and we look forward to progressing our community's priorities over the next year, "credit crunch" notwithstanding.



Councillor Roger Hollingworth, Leader
of Bromsgrove District Council and
Chair of the Bromsgrove Partnership
(since April 2009)

John Morgan

John Morgan, Vice-Chair,
Bromsgrove Partnership
(since April 2009)

2. Executive Summary

2.1 There has been a lot of progress towards delivering the Bromsgrove Sustainable Community Strategy 2008-2011 over the past year. Just a few highlights include:

- Total crime and anti-social behaviour has decreased across the District and latest performance against relevant LAA targets is good;
- Delivery of the Warmer Worcestershire Project, in conjunction with other Local Strategic Partnerships (LSPs) across the County, to assist in improving energy efficiency and reduction carbon dioxide emission;
- Commissioning of the new toilet block and improved bus station in Bromsgrove Town Centre;
- Despite the economic downturn, the introduction of the market on the High Street in March 2009 has had a positive impact on footfall;
- Significant progress towards the launch of Bromsgrove Urban and Rural Transport (BURT), a community transport scheme;
- Ongoing work on the proposed new Bromsgrove Train Station and cross city electrification which will have a significant economic benefit to the town;
- Considerable progress has been made to improve health and wellbeing across the District by the Theme Group's project groups and overall, the District's population is healthier than the England average;
- A group of young people from North Bromsgrove High School were successful in securing £80,000 from the DABID (Youth Capital Fund) to fund two multi-use games areas (MUGAs) in Sanders Park;
- 94 units of affordable housing were completed which was above the 2008/09 target of 80 units;
- Strengthened relationships with the voluntary and community sector, such as through the establishment of the Bromsgrove Trunk; and
- The innovative "U Decide" event for children and young people, which delegated £50,000 to them to decide how to spend, has subsequently received interest from Government Office.

2.2 Further details on achievements to date and progress against LAA targets can be found under section 3. Appendix B details key deliverables for each Theme Group and progress during 2008-09.

2.3 There are, however, still areas of concern which require future action and these include:

- The need to reduce CO₂ emissions across the District, with particular focus on businesses and transport;
- Town centre regeneration, which has been made more difficult by the economic climate;
- Development of the Longbridge site, which has also been delayed by the recession;
- The need for an appropriate mix of housing, in particular, affordable housing for young people, families and older people;
- The increasing ageing population and its impact on policy and planning for the District, with specific regard to community safety, health and the strength of communities;
- The growing health issue of the increasing prevalence of obesity in both adults and children;
- Despite an overall reduction in actual crime, the fear of crime remains an issue which needs to be tackled; and
- Although, compared to neighbouring areas, unemployment and benefit claimant levels are relatively low in the District, the “credit crunch” has inevitably had an impact and work to assist those not in employment, education or training (NEET) will need to continue.

2.4 The issues above will be addressed in the refresh of the Sustainable Community Strategy.

2.5 Bromsgrove Partnership has come along way over the last three years and work is still ongoing to further improve the LSP including: reviewing and revising the governance framework and structure to ensure we are fit for purpose for the future to deliver agreed priorities; streamlining the performance management arrangements, with a particular focus around challenging performance and financial input; and devising and implementing plans to carry out targeted community engagement to ensure all sections of the community have a voice.

2.6 Bromsgrove Partnership will continue to identify and articulate the needs and aspirations of the local community and is committed to driving improvement.

3. About the District

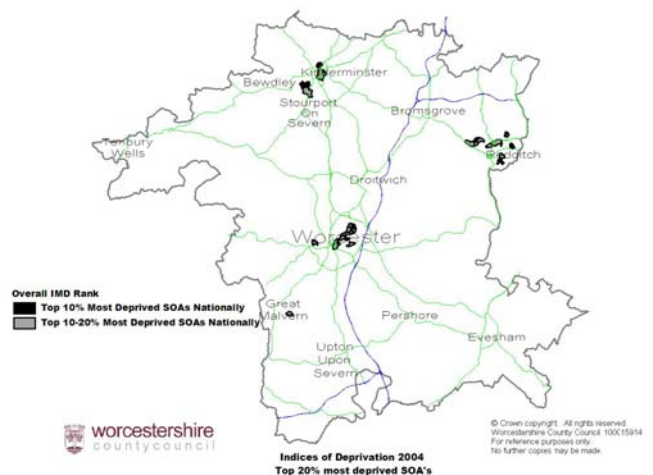
Geography and Communities

3.1 Bromsgrove District is in north Worcestershire, covering a large district area of approximately 83.9 square miles. Whilst only 14 miles from the centre of Birmingham, the Lickey Hills country park provides an important dividing line between the urban west midlands conurbation and the rural landscape of north Worcestershire. Approximately 90% of the District is greenbelt, which causes problems for housing policy (see 2.5). Four radial routes pass through the District, each served by railway lines and major roads, including the M5 running north and south, the M42 running east and west, with further links to the M40 and M6.

Figure 1 – Map of Bromsgrove District



Figure 2 – Map of County Deprivation



3.2 The town of Bromsgrove accounts for just over a third of the total population of the District, with other population clusters including Hagley, Rubery and Wythall. Data suggests that 16,643 people travel into the District for work, with 26,112 (29%) of the population travelling out, a net commute out of 9,469.¹ There are congestion issues along the A38 to the M42 and the railway station does not have capacity to cope with demand. Our main communities are detailed in Table 1. The District has no wards in the top 20% most deprived in England as shown in Table 2. In fact, there are a number of areas in Bromsgrove that fall within the least deprived 20% across the country, highlighting that the District is overall fairly affluent.

Population

3.3 The population of the District is estimated to be approximately 92,300 and there is a fairly even split between male and female inhabitants with 50.6%

¹ ONS 2001 Census

female and 49.4% male.² 93% of Bromsgrove residents are White British or White Irish and of the remaining 7% of the population, the ethnic group with the largest population size is White Other (1.5%), a group which includes people of Eastern European origin. 5.2% of the population is from other ethnic minority groups, one of the lowest proportions compared to the other six districts in Worcestershire.³

A defining characteristic of the District is its ageing population. The District has slightly more people aged over 40 than the average for the County. Currently, approximately 20% of the population are aged over 65 and this proportion is set to increase around 30% by 2026.⁴ It is expected that this increasing ageing population will have a significant impact on policy and planning for the District, with specific regard to community safety, health and the strength of communities.

Economy

- 3.4 The economic picture of the District is comparatively positive despite the current economic downturn. The mean annual household income is £39,642, which is the highest in the County (the County average is £36,251).⁵ Whilst the average household income is high, it is less than £25,000 per annum in Charford, Sidemoor, Catshill and St Johns Wards. Unemployment, whilst comparatively low, has risen from 1.4% a year ago to 3.7% in June 2009.⁶ This rate refers to the proportion of the working age population (based on the 2001 census) claiming Jobseekers Allowance. Data from May 2008 indicates that just 6.4% of the working age population (based on mid-2007 population estimates) claim key out of work benefits⁷ which is the lowest rate in Worcestershire.⁸ VAT registrations have risen slightly⁹ (pre “credit crunch” data) and are consistent with the national trend away from manufacturing, towards more service based industries.

There are three major areas of economic regeneration within the District: the Longbridge site, Bromsgrove town centre and Bromsgrove railway station. The area action plan for the Longbridge is in place, but stalled due to the changing economic conditions. Bromsgrove town centre needs a major overhaul to encourage local shopping and to be able to compete with neighbouring shopping centres. Bromsgrove station’s funding is almost secured. The new station will have a significant impact on Bromsgrove town, due to the planned Cross City Line electrification being extended to Bromsgrove and as a result bringing the town more into Birmingham City’s economic orbit.

² ONS Mid-2007 estimates

³ ONS mid-2006 population estimates

⁴ ONS projections - Research and Intelligence Unit, Worcestershire County Council

⁵ PayCheck 2009

⁶ Monthly Economic Assessment, Research and Intelligence Unit, Worcestershire County Council.

⁷ Key income related benefits include Jobseekers Allowance, Lone Parent on Income Support and Incapacity Benefits

⁸ Department for Works and Pensions 2008

⁹ FTI Area Profiles 2000-2007

Housing

- 3.5 One of the biggest issues facing the District is affordable housing: 83.4% of households are owner occupied,¹⁰ the 11th highest figure in England and Wales, and until the summer of 2007, house prices had risen faster than the national average, with the mean average house price being £237,599.¹¹ The 2008 annual house figures were not available at the time of writing but it is expected house prices have fallen in line with national trends. The Council is currently operating a planning moratorium with only affordable housing developments being built. The target for affordable housing, as stated in the Bromsgrove District's Housing Strategy for 2006-2011, is 400 over the 5 year period, equating to 80 units of affordable housing per year. The Council and Bromsgrove District Housing Trust will tackle this issue by ensuring the new developments (such as the Longbridge site, the town centre and any future housing allocation the District has to take as a result of regional housing policy) have an appropriate mix of housing, for example, outright ownership, shared ownership schemes, low cost home ownership and rented accommodation.

Whilst ensuring we provide enough affordable housing, we will also need to take increasing account of the expansion of our older population. The recent housing market survey, commissioned by BDHT and the Council, suggests an estimated need of 7,350 properties across all tenures. To date the debate has tended to focus on affordable housing; however, the survey has also identified the need for housing for older people. Meeting the needs of the rising 85+ population will require a good supply of sheltered, care at hand and extra care housing.

The need to keep our youngsters in our communities and our older people cared for within our communities applies not just to planned big developments (like Longbridge), but also our existing urban and rural communities.

We will also ensure an adequate supply of good quality temporary accommodation to ensure there is a safety net for those people made homeless through difficult circumstances.

The current review of the Regional Spatial Strategy is likely to require homes for 3,000-7,000 households to be built in the District in the next 25 years and it is also probable that the District will have to take some of Redditch Borough Council's housing allocation.

Education, Deprivation and Health

- 3.6 The overall proportion of the District's population with no qualifications is substantially lower than both the regional and national averages at just 7.8% compared to 17.0% and 13.1% respectively. Furthermore, the percentage of the population qualified to NVQ Levels 1, 2, 3 and 4 is also higher than the regional and national averages.¹² GCSE results gained at local authority

¹⁰ ONS 2001 Census

¹¹ Land Registry 2008 - Worcestershire County Economic Assessment 2008-09

¹² Nomis Web – ONS Annual Population Survey

schools and colleges in Worcestershire in 2008 were amongst the highest in the country (64.4% achieved five or more GCSEs at A*-C).¹³ The District ranks 299th out of 354 councils on the national index of multiple deprivation 2007 (where 1 is the most deprived), making the District one of the least deprived nationally.¹⁴ It is also the only district in Worcestershire to have become less deprived since 2004.¹⁵ As a result, identifying the vulnerable within our communities is more difficult than a district with geographic areas of deprivation.

- 3.7 Overall, the District's population is healthier than the England average. Physical activity in children is the one indicator which is worse than the England average. Some key points relating to the health of people in Bromsgrove are: early death rates from heart disease and stroke and from cancer have fallen; levels of deprivation, children in poverty and violent crime are lower than the England average; and teenage pregnancy rates have continued to decline and remain below national levels; however, there is a concern that lifestyles are becoming less healthy and potentially, we could be storing up problems for the future. For example, obesity in both adults and children is seen by NHS Worcestershire as major concern for Bromsgrove.¹⁶

Crime and Fear of Crime

- 3.8 Bromsgrove is known to be a low crime area and since 2005/06, total crime has reduced by 8.5% in the District, with British Crime Survey (BCS) Comparator Crime reducing by 12.7%;¹⁷ however, despite an overall reduction in actual crime, the fear of crime remains an issue. In general, 80% of residents have felt fearful about the possibility of any crime happening to them in the last 12 months, which is a significant increase on the 2007 figure of 56%.¹⁸ The crimes which residents fear the most are: house burglary; vandalism or damage to property; and having their car broken in to¹⁹ and the issues of concern that were identified by residents in recent surveys were: speeding motorists; "young people hanging around"; rubbish or litter lying around, underage drinking; and vandalism.²⁰

Environment and Climate Change

- 3.9 We want to ensure the Council and its partners take account of the serious issues we face on climate change. Each organisation will need to ensure it is doing its part through cutting energy consumption and increasing recycling.

There are targets in the Local Area Agreement (LAA) 2008-2011 which will be difficult to achieve; NI186 is concerned with reduction of CO₂ emissions and

¹³ Worcestershire LEA Key Stage 4 results 2007/08

¹⁴ DCLG Indices of Multiple Deprivation 2007

¹⁵ Ibid

¹⁶ Department of Health – Bromsgrove Health Profile 2009

¹⁷ iQuanta

¹⁸ West Mercia Crime and Safety Annual Survey 2008

¹⁹ Ibid

²⁰ Issues were identified within West Mercia Crime and Safety Annual Survey 2008, Bromsgrove District Council Quality of Life Survey 2008 and The Place Survey 2008/09.

NI 187, which is about tackling fuel poverty – people receiving income based benefits living in homes with a low energy rating.

Bromsgrove District Council is also in the special position of protecting the green belt south of Birmingham and stopping the urban sprawl. The rural areas will need to be protected from development and traditional country life maintained. The Bromsgrove Partnership wants the District's villages to have been developed in line with their local communities' wishes. The more urban areas on the fringe of the District will also need to be protected from encroachment by Birmingham unless the communities themselves wish to be part of the city region. Balancing those wishes with the need for affordable housing and potential shifts in regional housing policy regarding housing allocation is likely to be a key area of focus for the Bromsgrove Partnership Board over the next few years.

This year, Bromsgrove District Council with Redditch Borough Council, made a joint appointment of a Climate Change officer. Since then, the Council has, for the first time, calculated the total carbon emissions it emits from its activities, which totals a staggering 2,500,000 KGs per annum. Each property in the District emits on average over 10 tonnes. It is critical that the Council starts to reduce these figures.

4. LSP Performance in 2008/09

4.1 LOCAL AREA AGREEMENT

4.1.1 The Local Area Agreement (LAA) has 6 elements:

- a) Communities that are safe and feel safe
- b) A better environment for today and tomorrow
- c) Economic success that is shared by all
- d) Improving health and well being
- e) Meeting the needs of children and young people
- f) Stronger communities

As shown in Appendix 1, the Bromsgrove Partnership has structured itself to contribute towards these elements, as well as the things that are important locally. Detailed below are the outcomes for each of the Theme or Project Groups. Attached at Appendix 2 is the Sustainable Community Strategy Key Performance Indicators for April 2008 to March 2009. This document details the High Level Action Plans for each Theme Group.

4.2 **COMMUNITIES THAT ARE SAFE AND FEEL SAFE**

4.2.1 Performance

The Worcestershire LAA Targets are:

<i>PRIORITY:</i> To continue to improve community safety and build confidence in communities.		
National or Local Indicator	2010/11 LAA Target	Latest District Performance
NI 2 Percentage of people who feel that they belong to their neighbourhood	63.4% (District target 63.0%)	61.4%
NI 17 Perceptions of anti-social behaviour	13.3% (District target 11.4%)	12.3%
N 18 Adult re-offending rates for those under probation supervision	-7.77% on baseline (Predicted County baseline rate is 9.67%)	No data
NI 21 Dealing with local concerns about anti-social behaviour and crime by the local council and the police	31.2% (District target 27.8%)	27.8%
NI 195a Improved street and environmental cleanliness (levels of litter)	8%	2%
LI 4 Assault with injury crime rate	-1% on baseline (District target 4.63)	4.67
<i>PRIORITY:</i> To reduce the harm caused by illegal drugs and alcohol.		
National or Local Indicator	2010/11 LAA Target	Latest District Performance
NI 39 Alcohol - harm related hospital admission rates	1652 per 100,000 population	1229 per 100,000 population

The Bromsgrove Partnership key deliverables for this theme were:

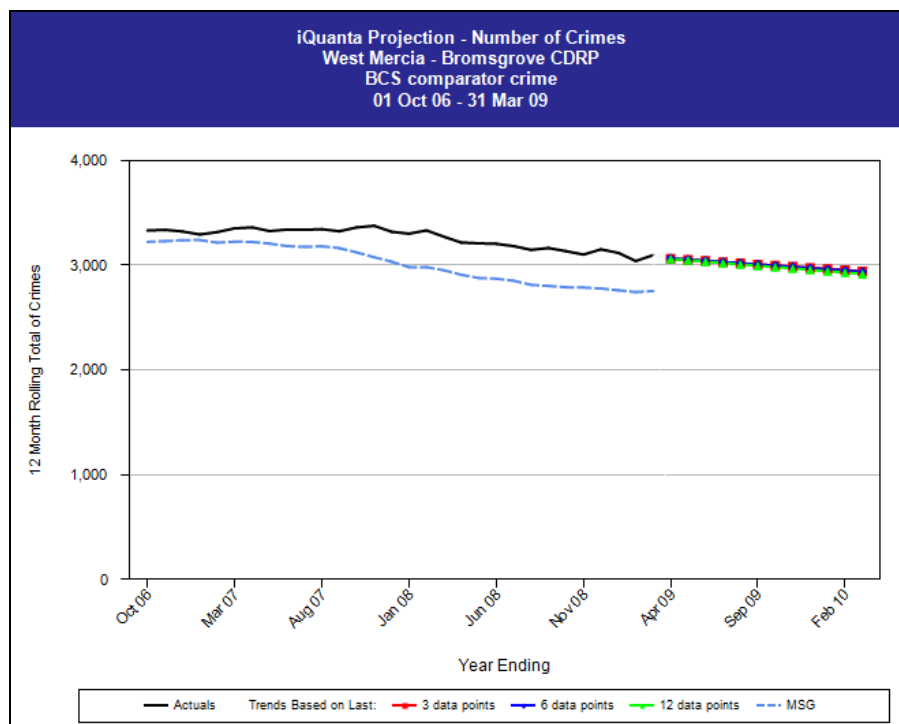
- People's perception of crime matches reality
- Reduction in anti-social behaviour in key areas²¹
- Improved safety through reduced recorded crime in serious acquisitive crime categories

²¹ Defined via use of dedicated CSP Analyst to highlight and prioritise those areas.

Performance achievement on this theme during 2008/09 has been as follows:

- Over the last 3 years, from 2005/06 to 2008/09, total crime has reduced by 8.5% in the District, with British Crime Survey (BCS) Comparator Crime reducing by 12.7% in the same time period.
- Violent crime accounted for 18% of total crime in Bromsgrove District in 2008/09, compared to 21% in 2007/08. Furthermore, the actual number of violent crimes has decreased by 12% over the 12 month period, and by 21.8% compared to 2005/06. (NB: violent crime is as per the Home Office definition and includes: assaults, robbery, harassment and possession of weapons).
- Criminal damage represents the highest percentage of the BCS Comparator Crimes in Bromsgrove at 34% of total BCS; however, the volume of offences decreased by 14% in the last 12 months, following an increase from 2006/07 to 2007/08.
- Vehicle crime has also reduced by 23.9% over the last 3 years, with over 250 fewer crimes in 2008/09 than in 2005/06.
- In the 2008 West Mercia Crime and Safety Survey, 49% of Bromsgrove residents said that the police were doing a good or excellent job in 2008 – an increase of 4% since 2007.
- Furthermore, 7% of respondents felt safer or much safer in their local neighbourhood now compared to 12 months ago, as opposed to 6% in 2007.
- In 2008/09 there were 6136 reported incidences of anti-social behaviour (ASB) across the District, a 1.8% reduction compared to 2006/07 levels.

Figure 3: Comparator Crimes for Bromsgrove District



Source: iQuanta

In May 2008 West Mercia Police with support from the Bromsgrove Community Safety Partnership has introduced the use of SmartWater, a colourless liquid solution that is simply dabbed onto the uneven surfaces of your valuables. It can be used to code all sorts of items such as jewellery, ornaments, electrical items and even your motor vehicle. Each bottle contains a unique chemical 'code' which is registered to you; conclusively proving ownership. It cannot be easily seen by the naked eye and is almost impossible to remove. The liquid glows under ultraviolet light making it easy for the Police to detect.

Figure 4: Example of SmartWater on Skin



A SmartWater Strategy™ has been specially developed to create fear in the mind of the criminal whilst allowing the police to engage with the local community, and in particular with those most vulnerable. New and highly innovative methods are being introduced all the time to react to crime trends and to the needs of Police, Community Safety Partnerships (CSPs) and Local Authorities.

SmartWater offers an infrastructure of support to the Police and their partners and comes with a proven track record as a sustainable deterrent of crimes such as burglary, robbery, theft from motor vehicles, hate crimes and domestic violence.

Within the first six months of the Bromsgrove SmartWater initiative:

- 554 Bromsgrove district households had purchased SmartWater from one of their local Neighbourhood Watch schemes with another 100 on order.
- 209 victims of domestic burglary in the past 12 months (or attempted domestic burglary) have received a free SmartWater pack.
- An additional 31 victims of domestic burglary who had been repeatedly victimised over the past 2 years have received a free SmartWater pack.
- 31 residents within the Rubery area has received free SmartWater packs courtesy of the Local Area Committee with a plan to distribute an additional 200.
- Around 160 SmartWater signs have now been placed on lamppost around the perimeter of Bromsgrove District and throughout local neighbourhoods.

4.2.2 Other Achievements

Community Safety Partnership (CSP) Tasking Review:

A review and improvement plan was undertaken for the CSP tasking group. The tasking review resulted in a number of improvements to the process including:

- The introduction of a pre-tasking meeting to help streamline the main meeting.
- Use of the SARA (Scanning, Analysis, Response, Assessment) problem solving methodology into tasking.
- Invitations to new cooperating members to the tasking group including British Transport Police, London Midland Trains and voluntary sector representatives. The group also has representation from the Bromsgrove District Council's Licensing department and West Mercia Police press office.
- Involvement of PACT (Partners and Communities Together) chairmen to contribute to discussions on their local areas.
- Monthly action plans replaced by long term action plans which are also concluded with an evaluation of any interventions.
- Action plans are directly linked to current priorities and the performance framework.
- Definition of anti-social behaviour (ASB) has been adopted by the CSP to help focus on the priority types of anti-social behaviour within the district
- Introduction of addition data sets from partner agencies to aid the analyst in carrying out a comprehensive analysis of problems.

The above improvements have resulted in greater attendance from partner agencies and an increase in their contribution to the process. The tasking process is more focused, outcome orientated and therefore more effective in dealing with local priorities and emerging issues.

Fear of Crime Action Plan:

A joint action plan between Bromsgrove District Council and West Mercia Police was rolled out to tackle the five wards identified as having the highest fear of crime in Bromsgrove. This included leaflet drops, articles in the Together Bromsgrove publication, and joint high visibility patrols between local policing teams and Neighbourhood Wardens in priority neighbourhoods and areas such as Bromsgrove Town Centre and Sanders Park. A specific operation named 'Operation Christmas Presence' was delivered which gave Bromsgrove Town Centre daily and nightly police and warden presence throughout December to offer safer shopping and a safer night time economy.

Figure 5: Police Officer presence in the High Street



Positive Activities for Young People:

A programme of urban arts activities were delivered by the Bromsgrove Community Safety Partnership. During March 2009 activities such as street dance, DJ, rap, music production, percussion and skateboarding across 4 areas within Bromsgrove District. The programme offered access to nearly 50 hours of provision throughout the month. Police Constables and Community Support Officers have also been trained by the Football Association as qualified Level 1 coaches to assist in the deliver of football coaching within communities.

Camera Replacement Programme:

Bromsgrove District Council undertook a programme of works which replaced and upgraded 25 of their CCTV Cameras. Cameras replaced were in Bromsgrove Town Centre, namely Worcester Road and The High Street, and New Road in Rubery.

The primary improvement made to the system is the purchase of cameras with a greater light gathering capability, and therefore improved night time vision. The lens specification was also tailored to each location putting more powerful lenses into areas where the distance to be viewed was further.

Figure 6: CCTV Control Room



Neighbourhood Wardens:

Bromsgrove District Council mainstreamed an additional Neighbourhood Warden post to compliment two Warden posts, one of which was already permanently funded via Bromsgrove District Council and the other funded on a 12 month temporary contract by the Bromsgrove Community Safety Partnership.

Figure 7: Neighbourhood Wardens



Additional Street Lighting:

£9,000 of funding from Worcestershire County Council was spent on additional street lighting in areas with high fear of crime and high rates of youth related ASB and criminal damage. The locations for additional street lighting were identified by the community who forwarded bids for the funding. An area within the Waseley and St. Johns ward were successful.

4.2.3 Areas of Concern and Future Action

Communications and Engagement:

The current performance framework has now has a greater emphasis on how our customers feel, rather than the rates of reported crime and disorder. Although levels of crime, disorder and ASB will still be monitored, Bromsgrove Community Safety Partnership will need to adapt their plans to place a greater emphasis on how we engage and communicate with our communities. Methods will need to be established to ensure the Partnership understand the local concerns of their communities and offer reassurance around the work they deliver to tackle these concerns.

Measuring Performance:

Many of the Community Safety targets from the Worcestershire Local Area Agreement will be measured through the bi-annual Place Survey. This offers the Bromsgrove Community Safety Partnership a challenge to find methods to monitor their own performance throughout the two year period to ensure that performance is on track.

Profile of Bromsgrove Community Safety Partnership:

The Partnership will be making an exception effort to raise the profile of the group and the work it achieves to both the community and with colleagues within the agencies that make up the partnership. This will assist them in working towards some key targets within the current Worcestershire Local Area Agreement; specifically around satisfaction rates in dealing with anti-social behaviour and other local concerns.

PACT:

Partners and Communities Together (PACT) meetings are now in their fourth year. Although in many areas attendance is still good, the meetings have now reached a natural cross roads where they need to be reviewed and perhaps revitalised. This is important to ensure that the process is still relevant and maximises its potential to engage with local communities.

Figure 8: Partners and Communities Together Logo



NI 39:

Although performance against NI 39 (alcohol-harm related hospital admission rates) for Bromsgrove is one of the lowest rates in the county, and Bromsgrove has experienced one of the lowest rates of increase since 2002/03, the increase over the past 6 years has still been 89%.

Self Assessment:

All Community Safety Partnerships are required to carry out a self assessment based on the Home Office's Hallmarks of Effective Partnerships. This self assessment will be carried out during 2009/10 and will form the basis of an improvement plan for the Bromsgrove Community Safety Partnership.

For more detailed information on the Theme Group targets and performance, please see Appendix 2.

4.3 A BETTER ENVIRONMENT FOR TODAY AND TOMORROW

4.3.1 Performance

The Worcestershire LAA Targets are:

PRIORITY: To maximise the diversion of waste away from landfill through prevention, reuse, recycling and composting and recovery.		
National or Local Indicator	2010/11 LAA Target	Latest District Performance
NI 193 Municipal waste land filled	48%	57% (County)
PRIORITY: To increase energy efficiency and increase the proportion of energy generated from renewable sources.		
National or Local Indicator	2010/11 LAA Target	Latest District Performance
NI 186 Per capita CO ₂ emissions in LA area	9% reduction	6.2 tonnes per capita (2007)
PRIORITY: To improve flood mitigation measures and improve drainage.		
National or Local Indicator	2010/11 LAA Target	Latest District Performance
NI 188 Adapting to climate change	All Districts to achieve at level 2	Level 0
LI 1a All vulnerable areas identified, integrated flood risk management plans developed and implemented	100%	No data
LI 1b Improved flood-warning system in place at Parish level		No data

The Bromsgrove Partnership key deliverables for this theme were:

- Reduce CO₂ to improve energy efficiency – 9% reduction by 31st March 2011
- Travel Plan for BDC (council only)
- Travel Plan for Bromsgrove District
- Bromsgrove District Council adapts to impacts of Climate Change – Achieve Level 2 of NI188 by 31st March 2011
- Increase in tonnage of waste sent by BDC for recycling and a decrease in tonnage of residual waste sent for disposal
- Clean and Safe Streets
- Translation of revised county level BAP into local action to protect and improve biodiversity

- BDC to sign up to West Midlands Biodiversity Action Plan and Pledge
- One local nature reserve
- Special wildlife sites in the District are being managed appropriately

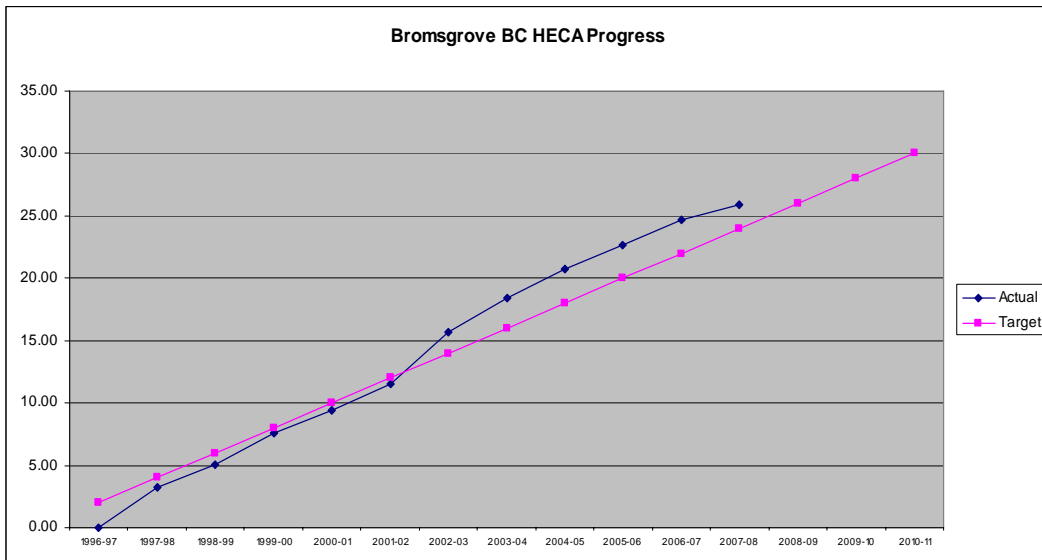
Performance achievement on this theme during 2008/09 has been as follows:

- The total amount of residual waste sent to landfill was 579.80kg
- 43.5% was recycled and composted which was slightly below target by 0.9%
- 100% of the District has achieved acceptable levels²² of street cleanliness in relation to flyposting, with 98% of the District reaching the same level regarding graffiti. As for litter, 94% of all land across the District achieved an acceptable level²³ of street cleanliness.
- The Council is on target with the Home Energy Conservation Act and has achieved an energy efficiency improvement of 25.21% (target is 30% by 2011). The SAP rating (energy rating) for private sector properties has improved and is 53.9 (previously 53.4).
- Development of a Council travel plan to encourage reduction in car usage was agreed in 2008
- The district is aiming to reduce CO₂ emissions by 3% each year. The baseline data of 2005 states that there is 243,000 tonnes of CO₂ produced from domestic houses. To reduce this and also help tackle fuel poverty in the district (NI 187) the following schemes have taken place
 - ◇ Free insulation programme for householders over 60. Insulation was installed in 288 homes which is a CO₂ saving of 122 tonnes per year.
 - ◇ Promotion of discounted insulation schemes to households in the district which resulted in 258 households being referred for insulation.
 - ◇ Renewable energy grants to assist resident in the installation of renewable technologies such as solar hot water panels.
 - ◇ Ongoing events have taken place across the district promoting energy efficiency along side event to encourage waste reduction and recycling.
- Bromsgrove District Council has signed up to the West Midlands Biodiversity Action Plan and the District Council has also hosted the launch of the Countywide Biodiversity Action Plan

²² "acceptable level" refers to Grade B or above as defined within the Code of Practice on Litter and Refuse (COPL&R), issued under Part IV of the Environmental Protection Act 1990 and which relates to NI 195 measure. In brief, to be assessed at Grade B or above, the area must be at least predominately free from litter, graffiti or flyposting.

²³ Ibid

Figure 9: HECA (Home Energy Conservation Act) Progress



4.3.2 Other Achievements

Bromsgrove has been a partner in the development and delivery of the Warmer Worcestershire project. The project is aimed at improving energy efficiency and reducing carbon dioxide emissions across the county and helping deliver two of Worcestershire LAA targets.

A thermal flyover of the county was undertaken during the winter and the flyover information was then been mapped on to GIS (Geographic Information System) and displayed on a central website www.warmerworcestershire.com. Residents are able to log onto the website and enter their postcodes. This will bring up their street and will show the heat loss from each house. Houses that are red show the highest heat loss and green the lowest heat loss.

Figure 10: Image showing heat loss from Buildings in Bromsgrove



Launch events have taken place across the District as part of the 'Small change Big Difference Week'. The project will continue through 2009/2010 and will now look to highlight potential target areas and link this to other data that is available, for example, benefit data, NI187 data and HECA (Home Energy Conservation Act) data.

Figures 11, 12 and 13: Warmer Worcestershire Launch Event in Bromsgrove



4.3.3 Areas of Concern and Future Action

Due to the sheer scale of the climate change agenda it has been difficult to focus on the broad remit of the action plan for 2008/09. To ensure that all actions are achieved, it has been decided to focus on two core priorities which will be mitigation and adaptation to climate change.

Figure 14: How global warming can affect us



For more detailed information on the Theme Group targets and performance, please see Appendix 2.

4.4 **ECONOMIC SUCCESS THAT IS SHARED BY ALL**

4.4.1 Performance

The Worcestershire LAA Targets are:

<i>PRIORITY:</i> To promote economic growth and enable the economy in targeted sectors and locations.		
National or Local Indicator	2010/11 LAA Target	Latest District Performance
NI 166 Average earning of employees in the area	94.3%	No data
NI 171 Business registration rate	115.5% of WM Regional Average	62.4
<i>PRIORITY:</i> To remove barriers to employment and improve skills in education, employment and training.		
National or Local Indicator	2010/11 LAA Target	Latest District Performance
NI 117 16 to 18 year olds who are not in education, employment or training (NEET)	4.4% (0.2% reduction)	2.6% (May 2008)
NI 152 Working age people on out of work benefits	8.4%	11.1% (Nov 07 – Aug 08)
NI 163 Working age population qualified to at least Level 2 or higher	79%	75.8%

The **Town Centre redevelopment** and **Longbridge regeneration** have been identified as the major priorities for the Bromsgrove Partnership (LSP) to concentrate on under the heading of Economic Success and further details can be found in the following sections.

Due to the recession, other Theme Groups were set up at the latter end of 2008/09 and are referred to in the refreshed Sustainable Community Strategy 2009-2012. The performance of those Theme Groups will be reported in the next Annual Report.

4.5 **TOWN CENTRE REDEVELOPMENT**

4.5.1 Performance

As you will see from the previous page, there are no Worcestershire LAA targets specific to the Town Centre. However, the expectation is that the town will be regenerated with due regard to the LAA targets, for example, affordable housing, designing out crime, CO₂ emissions and so on.

The Bromsgrove Partnership key deliverables for this theme were:

- Resident and community involvement
- Secure active partnership involvement in town centre redevelopment
- Expand retail offer in town centre

Bromsgrove town centre redevelopment is a long term project for the Council and the Partnership. There were 3 actions identified for the year, of which 2 (67%) were achieved. Achievements during the year include:

- Publication and completion of the issues and options consultation as part of the Area Action Plan.
- Appointment of a town centre regeneration project manager in partnership with the County Council.
- Planning of the redevelopment of the town centre toilet facilities and bus station area.
- Work was undertaken on the first phase of the unified vision for the town centre.
- Continued progress with the planning for a new medical centre on Market Street.
- Despite the set back experienced in the development of a new police and fire station on the former Parkside School site, progress has continued to be made in identifying a new location for a joint police and fire station.
- The market hall has been closed and the market has been moved on to the High Street.
- Improved Christmas Lights were introduced on to the High Street and sponsorship was secured to improve the floral display on the High Street

Figure 15: Christmas Lights



A large-scale consultation exercise was undertaken in 2008 on the Issues and Options. The Quality of Life Survey (April 2008) also asked respondents to choose three improvements from a list of 14 possible improvements. The results were as follows:

Figure 16: Town Centre Improvements requested from Quality of Life Survey

What improvements would you like to see in Bromsgrove

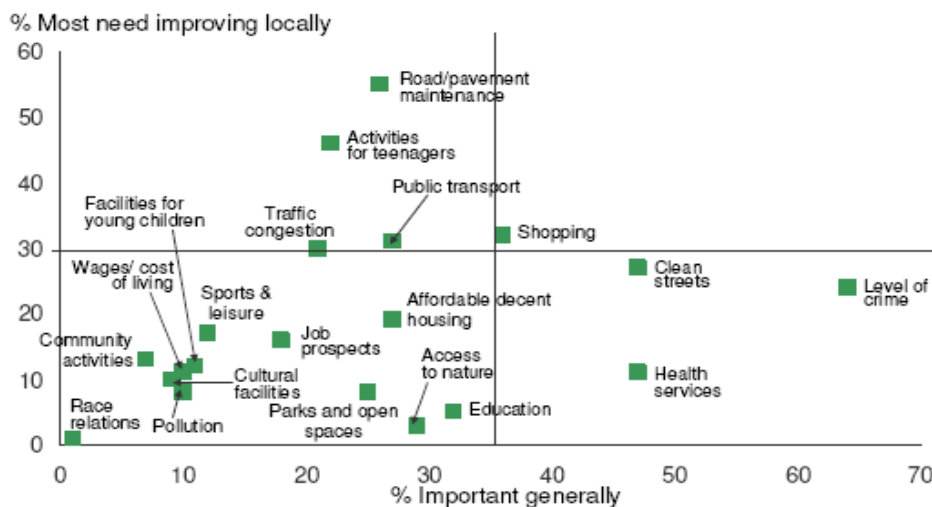


Base: All respondents (655)

The following chart is taken from the Place Survey 2008/09 and it shows shopping is the only area that is in both the top five of things deemed by the public to be of high importance (36%) and that needs to be improved (32%).

Figure 17: Customer Priorities for Bromsgrove (Place Survey 2008/09)

Developing priorities for improving quality of life



Ipsos MORI Base: All valid responses



The redevelopment of the market hall site has been affected by the credit crunch and plans to take the site through a European Union procurement process has been put on hold until the property market recovers.

Work on the preferred option of the Area Action Plan has been delayed owing to the situation regarding the listing of Parkside School building by English Heritage. This has had the effect of requiring the Police and Fire Service, together with the County Council, to identify an alternative site for the joint police and fire station. When that has been addressed, consideration will be given to recommencing work on the preferred option stage of the Area Action Plan. In the meantime, planning permission has been granted for the new Parkside Health Centre.

The credit crunch has also affected retailers on the High Street with several businesses closing including Woolworths. A number of retailers had been reporting that footfall had been in decline; however, the introduction of the market on the High Street, together with other High Street events, has had a positive impact on footfall and numbers appear to have increased. The rise in car park revenue supports this point.

According to the results of the Place Survey 2008/09, retail remains a major pre-occupation for local people with 32% wanting to see improvements, which is up 11% points since 2006/07. Nevertheless, towns similar to Bromsgrove which are experiencing closure of retail businesses and looking to develop their town centre in the future, focus increasingly on restaurants and dining opportunities. An ongoing concern is the expansion of hot food take away outlets and the affect these may have on High Street appearance and diet.

Figure 18: High Street, Bromsgrove prior to redevelopment



4.5.2 Other Achievements

The stakeholder group representing those with an interest in the development of the High Street continues to consolidate and the partnership working between the County Council and BDC has been further developed and strengthened over the past year.

Despite the economic downturn, the introduction of the market on to the High Street appears to have increased the number of people on the High Street and revived the fortunes of the market and therefore has been a success for both market stall holders and businesses located on the High Street. The new toilet block (which includes specialised facilities for disabled users), improved bus station and BURT (Bromsgrove Urban and Rural Transport) were all commissioned during 2008/09 and also provide visible signs of progress to the public.

Figures 19 and 20: The Market Launch in March 2009



4.5.3 Areas of Concern and Future Action

The principal areas where achievement was not realised were the disposal of the market hall site and the delay in the development of a new police and fire station.

The situation with the market hall was created by the credit crunch. The general condition of the property market will be monitored and plans are ready to prepare to take the market hall to tender.

The problems with the police and fire station are being addressed through efforts to identify an alternative site.

In addition to those actions, an area of focus over the next 12 months will be investigating funding for the High Street and completion of the Area Action Plan.

For more detailed information on the Theme Group targets and performance, please see Appendix 2.

4.6 **LONGBRIDGE REGENERATION**

4.6.1 Performance

As with the Town Centre, there are also no Worcestershire LAA targets specific to the Longbridge regeneration. However, again, the expectation is that the Longbridge regeneration will have due regard to the LAA targets, for example, affordable housing, access to training and education, etc.

The Bromsgrove Partnership key deliverables for this theme were:

- Creation of employment opportunities in Cofton Centre
- Monitor and disseminate information on Area Action Plan

The regeneration of the Longbridge site is another long-term initiative and will take some years to come to fruition. However, key points are:

- The Area Action Plan was completed and submitted to the planning inspectorate and approved in March 2009;
- A number of new developments are planned and over 700 houses are to be built on the former East Works site which falls within the boundaries of Bromsgrove District;
- Partnership work continues with City of Birmingham and Worcestershire County Council;
- Bromsgrove District Council officers continue to play a key role in the redevelopment of the site;
- A Joint Housing Working Group has been established which focuses on planning issues related to housing and the provision of affordable housing;
- A memorandum of understanding is being drawn up by Bromsgrove District Council, City of Birmingham and Worcestershire County Council, with regard to various aspects of the redevelopment;
- The redevelopment has been adversely affected by the credit crunch with plans for development being put on hold until there is a general up turn in the economy.

Figure 21: An artist's impression of the regenerated Longbridge site



4.6.2 Other Achievements

The work on the Longbridge site has helped to build good working relations with Birmingham and promoted effective work on housing matters, especially around affordable housing

4.6.3 Areas of Concern and Future Action

Progress with redevelopment has been adversely affected by the economic downturn and this has had an impact upon moving things forward.

Discussions are ongoing between landowners and planning authorities so that every effort is being made to ensure the worst effects of the current economic situation are addressed and the targets of 10,000 new jobs, 1400 new homes and a new Further Education (FE) college are not unduly delayed.

For more detailed information on the Theme Group targets and performance, please see Appendix 2.

4.7 **IMPROVING HEALTH AND WELL BEING**

4.7.1 Performance

The Worcestershire LAA Targets are:

<i>PRIORITY:</i> To support and improve the leading of healthy lifestyles and wellbeing of adults and children and young people.		
National or Local Indicator	2010/11 LAA Target	Latest District Performance
NI 8 Adult participation in sport	25.7%	25.6%
NI 56 Obesity among primary school age children in Year 6	15.5%	15.3% (2007/08)
NI 112 Under 18 conception rate	No target set in line with GOWM ²⁴ advice.	No data
NI 123 16+ current smoking rate prevalence (quitting for 4 weeks)	682 per 100,000 population aged 16+	721.5 per 100,000 population aged 16+ (2007/08)
<i>PRIORITY:</i> To improve the quality of life and independence of older people and those with long-term illness.		
National or Local Indicator	2010/11 LAA Target	Latest District Performance
NI 121 Mortality rate from all circulatory diseases at ages under 75	62.03	62.45 (2005-2007)
NI 133 Timeliness of Social Care Packages	92%	85% (County figure 2007/08)
NI 142 Number of vulnerable people who are supported to maintain independent living	98.02%	97.52% (County Figure)
LI 6 Adults with learning disabilities in employment	6.3%	No data
LI 7 Adults in contact with secondary mental health services who receive support with employment and training issues	+5% on baseline (County 08/09 baseline is 539)	No data

²⁴ Government Office West Midlands

The Bromsgrove Partnership key deliverables for this theme were:

- Increase life expectancy and reduce morbidity
- Reduce prevalence of smoking
- Improve mental health
- Improve health and well being of older people through ageing well scheme
- Local alcohol misuse reduction action plan

Significant progress has been made this year to improve health and well being in Bromsgrove. The main focus of activity has been around increasing opportunities for and levels of physical activity for all ages, supporting the prevention and reduction of smoking, reducing the health impacts of alcohol misuse, promoting and supporting positive mental health and developing an age well scheme.

The Bromsgrove Extended Community Activity Network (BECAN) continued to successfully increase and improve the number and range of opportunities for physical activity across the District. During 2008/09 a new gym facility opened at the Dolphin centre and discounted and free swim programmes were introduced for the pool. A full audit of sport and physical activity opportunities was undertaken and a directory is being developed. BECAN successfully bid and were awarded external funding for the following variety of programmes:

- A new community walks coordinator to build up a programme of walks led by volunteer walk leaders across the District as well as develop a walking resource for use by independent walkers;
- A new activity referral scheme (12 week programme) for use by Bromsgrove health professionals to refer individuals with chronic stable conditions;
- “Try New Things” – a programme of new activities for 16-19 year olds to prevent the traditional drop out of sport/physical activity and support participation in sport at Key Stage 5;
- A new multi-sports club for those of all ages with disabilities; and
- A new diversionary angling programme to engage disaffected young people.

Figure 22: The new multi gym at the Dolphin Centre



Figure 23: Participants enjoying the angling project at Hunnington Fishery



A smoking project group continued to support local employers and retailers with the smoking ban and underage sales and by promoting heart smart business awards. Smoking cessation has been further increased via the roll out of brief intervention training and smoking cessation training for LSP partner employees, pharmacies and Children's Centres. Funding has been successfully awarded for a pilot to provide smoking prevention and cessation to young people through peer mentorship.

During 2008/09 a new alcohol misuse reduction project group has been set up. The project group have developed an action plan that tackles health impacts, crime and disorder and underage drinking. The project group are responsible for implementation of a Bromsgrove focussed action plan based on the Worcestershire Alcohol Action Plan 2009-2011.

The Health and Well Being Theme Group has championed mental health and well being across the District. The theme group has actively promoted positive mental health to LSP partners and local employers by supporting the implementation of "Wellness Works". A "Food and Mood" campaign was held on World Mental Health Day by running training sessions for managers on stress awareness. A mental health awareness workshop was held to enable front line staff working in Bromsgrove to identify mental health issues and refer to appropriate agencies for advice and ongoing support.

To improve health and well being for older people affordable warmth training was provided for all partner front line staff to enable them to provide advice and support to those people facing fuel poverty. Drop in clinics providing advice on fuel bills and energy efficiency has been provided for people living in Bromsgrove.

Work on falls prevention has been ongoing and a number of mobility sessions have been set up around Bromsgrove, this is based on Postural Stability Information exercises to help prevent falls in high risk groups.

An ageing well scheme is currently being developed which is looking at many factors which influence the health and wellbeing of people aged 55years and above.

Figure 24: Mobility Session



4.7.2 Other Achievements

In 2009 the High 5 Event co-ordinated by Bromsgrove Sports Development drew a crowd of over 4,000 people who enjoyed a variety of activities, performances, demonstrations and information stalls including live American wrestling, Flics cheerleading squad, Smoking Cessation Services and Keep on Moving Disability Sports Club. The event combined with the Timberhonger 10km and Children's Challenge and ran on the same weekend as the Bromsgrove Carnival.

In addition, the Sport and Active Recreation Strategy for Bromsgrove District was developed and adopted by the BECAN group for 2009-2012.

Members of the BECAN group also developed a comprehensive delivery plan for Sport Unlimited and in 2008/09 successfully delivered a portfolio of projects totalling £25,000. A variety of activities including sailing, dodgeball, gymnastics and tennis were delivered to over 1,900 children and young people aged 5-19yrs as a result of this funding stream alone.

Funding has been secured to develop an allotment and healthy eating project in Sidemoor to tackle obesity and encourage healthy lifestyles.

Figures 25, 26 and 27: Photos from the High 5 Event in 2009



4.7.3 Areas of Concern and Future Action

Currently, approximately 20% of the population are aged over 65, and this proportion is set to rise to around 30% by 2026 which is likely to have an impact on health and wellbeing²⁵.

The ageing well programme for Bromsgrove was not up and running in 2008/09 but has been fully considered and worked up. The programme requires a funding stream and the Age Well Project Group, Health and Wellbeing Theme Group and Older People's Theme Group are working hard to secure funding to implement a pilot in Bromsgrove.

Fall prevention work needs to continue by working with the Worcestershire Falls Prevention Group to develop a program of Postural Stability Information to run groups in Bromsgrove. Funding for these groups is currently being sought.

As the relevant national indicator for the Alcohol Misuse Reduction Project Group (NI 39 - alcohol-harm related hospital admissions) falls under 'Communities that are safe and feel safe', the project group will also report to the Communities Safety Board. It is interesting to note that evidence suggests that the alcohol-harm related hospital admissions relate to older people suffering from conditions caused by long-term drinking.

An area of concern for the health and well being of Bromsgrove residents is the growing public health issue of increasing prevalence of obesity. The Theme Group will specifically start to tackle obesity and focus activity around improving diet, nutrition linked to physical activity.

For more detailed information on the Theme Group targets and performance, please see Appendix 2.

²⁵ ONS projections, Populations projections by age 2007-2026, Research and Intelligence Unit, Worcestershire County Council

4.8 MEETING THE NEEDS OF CHILDREN AND YOUNG PEOPLE

4.8.1 Performance

The Worcestershire LAA Targets are:

PRIORITY: To ensure all children and young people have the opportunity to participate in positive activities.		
National or Local Indicator	2010/11 LAA Target	Latest District Performance
NI 110 Young people's participation in positive activities	83.3%	72.2% (County Baseline 2008/09 – No District Figure)
LI 2 Children who have experienced bullying	33%	35% (TellUs2 Survey) (County Figure 2008)
LI 5 Average number of disabled children accessing short breaks	500	No data

The Bromsgrove Partnership key deliverables for this theme were:

- Support children and young people to lead healthy lifestyles
- Promote positive involvement of children and young people in decision making
- Promote well being through access to opportunities and sport

Performance achievement on this theme during 2008/09 has been as follows:

- A questionnaire has been produced and circulated to schools, youth and sports organisations to collate information to discover the extent to which the five hours of participation in sport is being achieved.
- Information has been collected on obesity levels amongst 6 year olds.
- An event was organised and held in January 2009 to assist children and young people to prepare funding applications for money provided by the District Council and the County Council to support activities for children and young people.
- Received and considered information from the Department for Children, Schools and Families TELLUS survey on activities for young people.
- Commenced work on collecting information on non-sports activities for young people and healthy eating initiatives in Bromsgrove.

- A group of young people from North Bromsgrove High School made a presentation to the group which resulted in them securing £80,000 from the DABID fund (Youth Capital Fund) to provide two multi use games areas (MUGAs) in Sanders Park.

Figure 28: Pete, Jess and Meg who were part of the group which successfully secured £80K for 2 Multi-Use Games Areas in Sanders Park



4.8.2 Other Achievements

- Worked with the County Youth Support Team on furthering work on local commissioning.
- Organised a briefing for Councillors on corporate parenting.
- Commenced work on a safeguarding policy for the District Council.
- Assisted in working with the voluntary sector to re-establish youth work in Charford following the closure of the MARC.
- Collaborated with the County Council's Extended Services to re-introduce homework clubs in Charford.

4.8.3 Areas of Concern and Future Action

Progress with the 'Cool to be Healthy' initiative was limited and, based on 2005/06 figures, there are a number of areas in the District where more than 20% of children are overweight. Therefore, discussions have taken place as to whether the original ideas were feasible and a different approach is being explored that draws more heavily upon existing partners work as opposed to introducing an additional project.

For more detailed information on the Theme Group targets and performance, please see Appendix 2.

4.9 **STRONGER COMMUNITIES**

4.9.1 Performance

The Worcestershire LAA Targets are:

<i>PRIORITY:</i> To improve accessibility by addressing congestion and improving public transport.		
National or Local Indicator	2010/11 LAA Target	Latest District Performance
NI 169 Non-principal roads where maintenance should be considered	8.4%	11.02% (County Figure 2007/08)
NI 175 Access to services and facilities by public transport, walking and cycling	94%	Proxy Figure 83.2% (2007) Proxy Figure 85.1% (County 2007)
<i>PRIORITY:</i> To reduce levels of inequality within the community.		
National or Local Indicator	2010/11 LAA Target	Latest District Performance
NI 116 Proportion of children in poverty	12.0%	13.9% (County Figure)
LI 3 Successful new claims for pension credit	2,700 (County Figure)	No data
<i>PRIORITY:</i> To provide decent and affordable housing that meets the diverse needs of Worcestershire.		
National or Local Indicator	2010/11 LAA Target	Latest District Performance
NI 154 Net additional homes provided	1,830 (County Figure)	542 (County Figure) 135 (District Figure)
NI 155 Number of affordable homes delivered (gross)	450 (County figure)	145 (District figure – 08/09target was 80)
NI 187 Tackling Fuel Poverty – Percentage of people receiving income based benefits living in homes with low energy efficiency rating – deferred.	SAP below 35 - 7.68% SAP above 65 - 39.73%	SAP below 35 - 8.77% SAP above 65 - 36.11%

Older people and **housing** have been identified as the major priorities for the Bromsgrove Partnership (LSP) to concentrate on under the Stronger Communities block, and a theme group was also started during the year to look at issues around **transport**. Further details on these three Theme Groups falling under this block, can be found in the following sections.

4.10 **OLDER PEOPLE**

4.10.1 Performance

The Bromsgrove Partnership key deliverables for this theme were:

- Operate an effective directory of services for Older People
- Map outreach services provided by all agencies
- Older people access services more easily
- Older people have a greater voice

We live in an ageing society and as referred to in section 2 of this report, currently, approximately 20% of the population are aged over 65. This proportion is set to increase around 30% by 2026²⁶ and Bromsgrove's 85+ population is forecast to almost double rising approximately 90% between 2009 and 2026²⁷. As the increasing ageing population could have a significant impact on policy and planning for the District, the Bromsgrove Partnership felt it was important that this was acknowledged.

During the period April 2008 and March 2009 the Older People's Theme Group has worked within three priority areas and of the nine actions planned for the year, one was deferred and eight completed which included:

- Review of the mapping of services available for older people in the County and District;
- Identified three gaps in service provision – alcohol, mental health and community transport, which were all referred to other LSP theme groups;
- Recruited three Older People's champions; and
- Publicised a range of local, regional and national events, publicity campaigns.

Currently, Bromsgrove District Council is undertaking overview and scrutiny investigation of Older People's services and the LSP Theme Group Chairman is a co-opted Member of the Task Group. It is hoped that the investigation will result in recommendations that will support the work of the Bromsgrove Partnership and specifically the Older People's Theme Group.

Worcestershire County Council is currently in the process of refreshing its Older People's Strategy for the County and this will be used to inform priorities for future work.

²⁶ ONS projections - Research and Intelligence Unit, Worcestershire County Council

²⁷ Ibid



4.10.2 Other Achievements

The Older People's Theme Group referred the gaps in service provision to the Bromsgrove Partnership Board. A Community Transport Sub-Group was established under the Transport Theme Group and the Health and Well Being Theme Group looked at the issues around alcohol and mental health. There is now an Alcohol Sub-Group and four mental health workshops are being planned.

4.10.3 Areas of Concern and Future Action

The one target not achieved was to survey older people. This was due to the fact that in July 2008 Bromsgrove District Council commissioned two focus groups with a selection of older people, one in Bromsgrove and one in Hagley, to help explore what the key issues were that older people in the area face. The information gathered has been shared with the Older People's Theme Group and it was felt that a separate survey was not required.

Funding projects arising from this Theme Group has been a concern; however, the District Council is currently funding over 60s swimming and has recently launched BURT (Bromsgrove Urban and Rural Transport) which is subsidised by the District Council. The District Council also has a shopmobility scheme which offers customers the use of manual and electric wheelchairs and motorised scooters, free of charge. The longer term funding of the Age Well Scheme and over 60s swimming are a concern and funding for an Older People's Directory is an issue that will be discussed in the forthcoming budget round.

For more detailed information on the Theme Group targets and performance, please see Appendix 2.

4.11 **HOUSING**

4.11.1 Performance

The Bromsgrove Partnership key deliverables for this theme were:

- Comprehensive understanding of the housing market and housing demand/supply within Bromsgrove
- Review of Planning Policy to support housing demand
- Delivery of Affordable Housing in Bromsgrove and Rural Areas
- New Affordable housing in Bromsgrove Town Centre
- Affordable Housing on Longbridge Site (East Works)

As referred to under paragraph 2.5, there is an imbalanced housing market in the District. It is very difficult due to high property values and affordability for young people and families to move into the District and appropriate purpose built aspirational housing is also required for our older residents.

The Theme Group had 6 planned actions for year, 3 of which were fully achieved, 3 others are ongoing due to delays in Regional Spatial Planning Process. Some of the highlights were:

- Completion of a project plan and funding proposals in place for a Housing Market Assessment Study in order to provide critical evidence as to future housing requirements in the period up to 2026. The study has led to the production of a new Housing Strategy. Representations were made about the housing allocations detailed within the Regional Spatial Strategy.
- Ongoing work to ensure that local planning policy fully complements the priority for affordable housing and assists in correcting the market imbalance
- 94 units of affordable housing completed – target was 80 units for 2008/09. (Tenure percentage of affordable - Midlands and England and Wales of 21%, showing a minimum shortfall of 10.5%).
- Negotiations were progressed and the Area Action Plan submitted to the Secretary of State in March 2008 for more than 35% of the 700 homes planned for the Longbridge site to be affordable housing.

4.11.2 Other Achievements

The theme group working in partnership have:

- Secured funding and planning for a major development of 150 affordable homes in Perryfields Road Bromsgrove.

- Created a working relationship with the County Council to understand and bring about the release of land for affordable housing developments.
- Commenced work on Bromsgrove's first Foyer development for displaced younger people.

Figure 29: Architect's drawing of the Bromsgrove Foyer development



4.11.3 Areas of Concern and Future Action

The world economic recession has effectively stopped the development of housing on the Longbridge site. It is however hoped that we soon see the signs of recovery.

The Process of the Regional Spatial Planning Strategy, which is outside of our control, has been delayed with knock on delays to the local strategic planning process. The Panel report is, however, due in October 2009 and it is hoped that this release will begin to clarify the position.

For more detailed information on the Theme Group targets and performance, please see Appendix 2.

4.12 **TRANSPORT**

4.12.1 Performance

The Bromsgrove Partnership key deliverables for this theme were:

- Access to services and facilities by public transport, walking and cycling
- Community Transport
- Integrated Passenger Transport Strategy

Performance highlights during 2008/09 include:

- Multi-modal interchange and new train station.
- Cross City line electrification.
- Signalling.
- Community transport.
- Shopmobility.

It has been a mixed year, but generally positive year for transport. Overall, the profile of transport planning and provision has risen across the County and in the District. At a county level, the County Council has approved its Integrated Passenger Transport Strategy (IPTS), which provides a long term vision for improving the transport infrastructure and services. At a district level, the Bromsgrove Partnership has established a Transport Theme Group and Community Transport Project Group, which have been actively supported by both the District and County councils.

The most visible local developments since last year have been the revamp of the bus station in Bromsgrove town and the launch of Bromsgrove Urban and Rural Transport (BURT).

Both the bus station revamp and BURT are specific responses to customer feedback

As part of the town centre regeneration and new toilet block, the town centre bus station has been given an overhaul and was opened on 3 August 2009.

Figures 30 and 31: Revamped Bus Station in Bromsgrove Town Centre



BURT is a community transport scheme that operates across the District and is a discretionary service, so the District Council is demonstrating a clear financial commitment to the transport agenda. BURT started on 21 September 2009.

Figure 32 and 33: Logo and launch photo of BURT with some members of the Community Transport Project Group



We had hoped to report in this annual report that funding was secured for the proposed new Bromsgrove train station. Unfortunately, negotiations for this multiple funded scheme have proved more protracted than originally thought; however, there has been progress. An additional £5m has been secured from Central Government, as a result of the efforts of the County Council. The County Council has also completed a travel assessment of the train station and the proposed cross city line electrification to Barnt Green and Bromsgrove is now a committed scheme for Network Rail (for 2014).

The new station and, in particular, the cross city electrification extension will result in up to three extra trains an hour and will have a significant economic benefit to the town. The County Council are currently in detailed negotiations with Network Rail over the design, build and estimated cost of the new station (the signalling upgrade will also be undertaken as part of this work). The train station will also see an improvement to buses to and from the station, footpaths, signage and roads. The County Council has committed over £1m to these schemes.

Figure 34: Bromsgrove Train Station



4.12.2 Other Achievements

The County Council has also started to undertake a review of the District's transport infrastructure and bus routes, in line with its IPTS. A bus stop audit and an initial review of bus routes in and around Bromsgrove town have been completed. It is anticipated that a "hopper service" operating around the town centre and linking to the bus station will commence once the new train station has been built. The County Council has also improved the marketing of bus services through an improved website and leaflets.

4.12.3 Areas of Concern and Future Action

Despite this progress there are quite a few areas of concern for the various projects of the Theme Group:

BURT

- Will demand outstrip supply and will we be able to retain funding for this discretionary service as the expected public sector expenditure squeeze takes effect next year?
- The location of the drop off point for shopmobility is not ideal (although this should be resolved once the Council moves to pay on foot for its car parks).

Train Station

- Planning permission for the new train station, in particular, whether the station can be treated as a permitted development (this may delay the scheme by several months).
- The potential reduction in the scope of the scheme in order to keep costs within budget, in particular, the proposed reduction in car parking spaces from 350 to 200, the potential removal of the station building from the design and reduced bus exits.
- The public consultation on car parking around the station, which is likely to be contentious.

Intelligent Public Transport Systems (IPTS)

- Funding for the "Gold Standard" Bromsgrove bus station (modal interchange), which needs to be included in Local Transport Plan 3 (2012 onwards).
- The funding implications of the bus stop audit and how the information will be fed into each organisation's budget round.

Wythall Train Station

- Funding for the proposed car park

For more detailed information on the Theme Group targets and performance, please see Appendix 2.

4.13 **OTHER LSP GROUPS**

The Bromsgrove Partnership also has local priorities as stated earlier in the report and has groups to support the local Compact and communications. Updates on progress are given below.

4.14 **COMPACT STEERING GROUP**

A compact is an agreement of how the statutory and voluntary community sectors (VCS) will work together and build understanding of each others' sectors. BDC signed up to the County Compact in 2006, but it was felt important to do something locally, so a local Compact was developed and launched in November 2006. A steering group was convened to progress this strand of work.

BDC and BARN (Bromsgrove and Redditch Network) have a service level agreement which commenced on 1 April 2008 and will continue until 31 March 2011. This funding agreement reflects the District Council's commitment to support the local VCS infrastructure and in particular:

- To improve partnership participation between the Council and the VCS;
- To improve governance, decision making and setting priorities in the VCS;
- To facilitate local VCS infrastructure; and
- To build capacity and skills of local VCS.

The Partnership Agreement is monitored and reviewed on an annual basis and a work programme is also devised each year. Subject to BARN fulfilling their obligations (such as providing a voice for the VCS), the District Council pays £5,000 each year of the agreement. At the last review meeting for 2008/09, it was concluded by both BARN and BDC that:

"...overall the progress report had been positive and relations between VCS and the Council had improved. It was agreed that joined up working and good relationship between the Council and the VCS would lead to improved outcomes for local residents within Bromsgrove District."

4.14.1 **Performance**

The Bromsgrove Partnership key deliverables for this theme were:

- Secure improved co-operation for joint working and information sharing between statutory and voluntary sectors
- Comprehensive understanding of, and strengthened connections between statutory and VCS sectors in the District
- Extend opportunities and knowledge of volunteering in statutory sector

Of the 8 actions planned for this year, 6 were completed on target (75%). During the year, the steering group has:

- Made progress to promote greater understanding and co-operation between the Voluntary and Community Sector (VCS) and the statutory sector by regularly attending BARN meetings and presenting on issues such as the town centre redevelopment and engagement in the design of the new toilet block in the town centre;
- Representatives from the Stroke Association came into the Council House during National Volunteers Week to take blood pressure checks;
- Staff from Bromsgrove District Council have held a number of 'Dress Down Fridays' in support of various charities such as the Stroke Association and Breast Cancer Research;
- Bromsgrove District Council has: granted space in the Hub display screen at the Customer Service Centre to promote volunteering and events organised by the VCS; provided space in the Hub for voluntary groups to hold surgeries (however, take up has been variable); and made available its notice boards across the District for VCS organisations to advertise events and activities.
- BARN has continued to prepare information about the work of the VCS in the District for the LCD screens at the Hub and approval was given for VCS organisations to display information on the District Council's notice boards across the District.
- The District Council's partnership working with Bromsgrove Youth Homelessness Forum (BYHF) and BDHT was recognised by CLG as West Midland's Regional Centre of Excellence for Youth Homelessness (2008-09). This was primarily based on private tenancy scheme for under 25s which is funded by the District Council and delivered by Bromsgrove Youth Homelessness Forum.

Figure 35: BDC, BDHT and BYHF together at a Housing Event in May 2009



- The group has commented on Bromsgrove District Council's Draft Volunteering Policy and advised on its safeguarding work with children and vulnerable adults.
- Pursued the involvement by Bromsgrove District Council staff in voluntary activities. During National Volunteering Week approximately 18 members of staff from Bromsgrove District Council participated in voluntary activities with a range of organisations. The placements were organised by Bromsgrove and Redditch Network (BARN);

Figure 36: BDC Health and Safety Officer Volunteering for Age Concern



4.14.2 Other Achievements

The Compact Steering Group has strengthened its relations with the voluntary sector through attending VCS conferences and working with the voluntary sector on neighbourhood redevelopment work which has led to the establishment of the Bromsgrove Trunk which is located in Charford.

Figure 37 and 38: Front entrance and attendees at a popular computer course held four times a week at the Bromsgrove Trunk



4.14.3 Areas of Concern and Future Action

The planned round table event at which representatives of the voluntary sector would hear about the work of each of the Council's department did not take place. This has now been replaced by regular attendance by Bromsgrove District Council officers (as chosen by the Chief Officer of BARN) at BARN's quarterly meetings in Bromsgrove.

The only other action which did not hit target was the development of Bromsgrove District Council's Volunteering Policy. A draft policy has been discussed by the Compact Steering Group and a final draft, incorporating comments, has been completed. It is anticipated that the policy will be in use by December 2009.

For more detailed information on the Theme Group targets and performance, please see Appendix 2.

4.15 **COMMUNICATIONS (INCLUDING COMMUNITY ENGAGEMENT)**

4.15.1 Performance

The Bromsgrove Partnership key deliverables for this theme were:

- % of those surveyed who feel they can influence the decision making process
- Effective communication

Performance highlights during 2008/09 include:

- Partners and Communities Together (PACT).
- Local Neighbourhood Partnerships (LNPs).
- Press releases.

The District Council and its partners have continued to invest high levels of time and Member/officer commitment into community engagement activity. This was commented on very positively in the District Council's most recent report from the Audit Commission:-

“The Council is performing well in this area. It has a sound strategic framework for planning its priorities, supported by robust business planning. It actively engages the public in identifying priorities, and has an effective approach to engaging its diverse communities and understanding their concerns.”

Bromsgrove Partnership actively supports PACT meetings (with the Police, BDHT and Council all fielding officers). The District Council sent a senior manager to 80% of PACT meetings during 2008/2009. The District Council and County Council also worked closely on the “U Decide” event for children and young people, which delegated £50,000 to them to decide how to spend.

Figures 39 and 40: Young people involved in 2009 event and logo



“U Decide” was innovative and has subsequently received interest from Government Office.

The Local Neighbourhood Partnerships (LNPs) continue to progress, with both Alvechurch and Beoley and Rubery delivering local improvements for residents.

Figures 41 and 42: Alvechurch and Beoley LNP Poster and Rubery LNP Banner



The Communications Group has been disbanded and a decision taken not to press release after each Board meeting. This decision was taken on the advice of an experienced communications manager from Westminster. Instead, the lead partner press releases and ensures other partners are referenced. This is based on the view that the public will relate to an organisation, whereas they are less likely to do so with the LSP, which is not an accountable body.

4.15.2 Other Achievements

The Council has actively supported the LSP Board in updating the Sustainable Community Strategy to include the new Local Area Agreement targets (2008/2011) and is currently undertaking a fundamental review. The LSP Board has received positive feedback from Improvement and Efficiency West Midlands (IEWM) on its approach to this review.

4.15.3 Areas of Concern and Future Actions

The parish plan “adoption” process was suspended and re-prioritised due to a number of vacancies at the District Council. This work will be picked up in the autumn and completed by March 2010.

Other areas of concern are:

- Long term funding of expansion of LNPs as the result of the “credit crunch”.
- Labour Party disagreement with the County Council’s role on LNPs.
- Charford LNP decision of Labour Party district councillors not to participate.
- “Hagley and Rural” LNP and whether LNPs will work in parish setting.

For more detailed information on the Theme Group targets and performance, please see Appendix 2.

5. What next for the Bromsgrove Partnership?

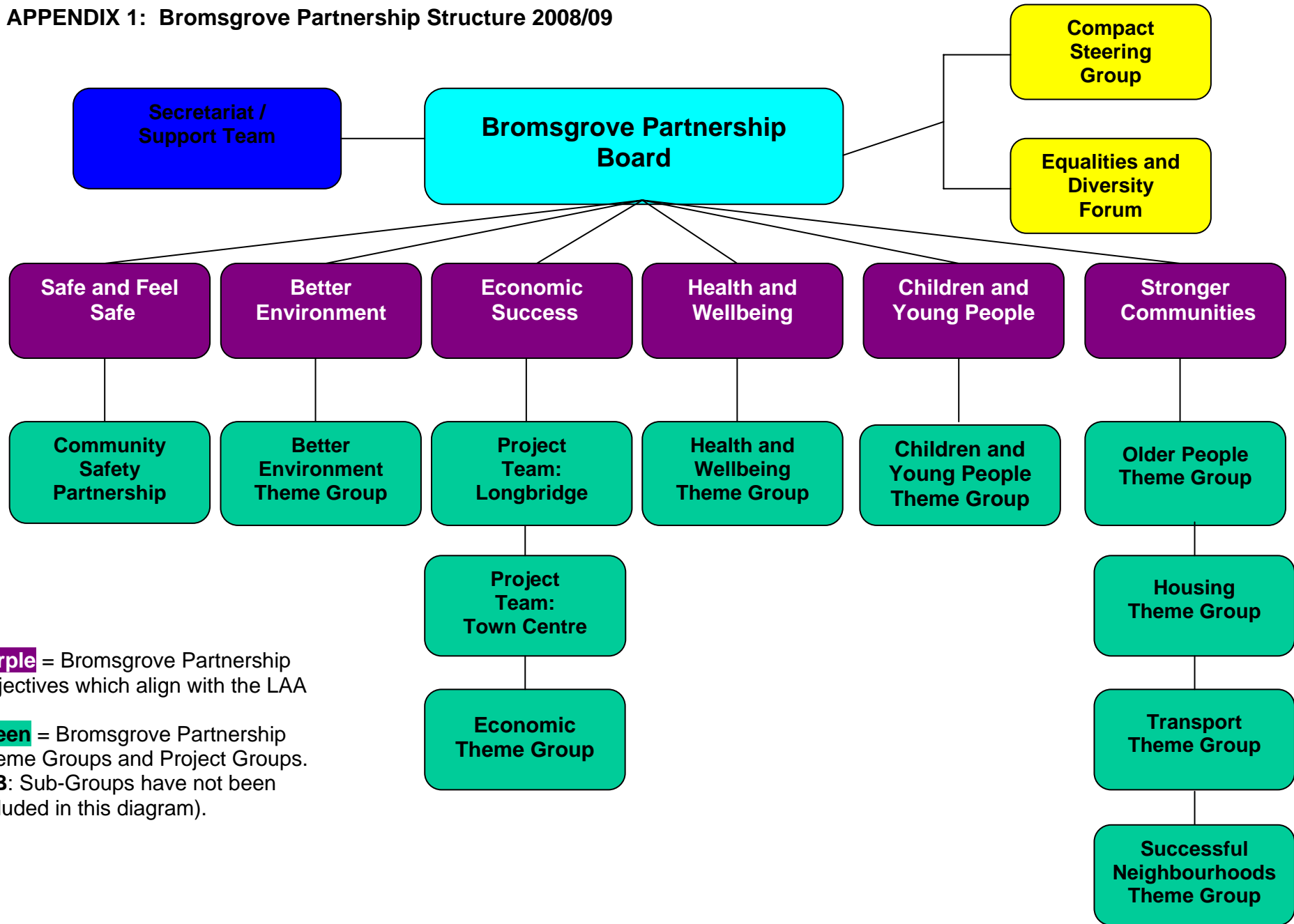
- 5.1 Away Days for all Bromsgrove Partnership members have already been held this year to review the current Sustainable Community Strategy and performance to date. Priorities for 2010 have been set, in line with the refreshed Worcestershire Local Area Agreement (LAA) and High Level Action Plans have been revised to ensure the Bromsgrove Partnership makes as full a contribution towards LAA targets as possible.
- 5.2 The structure of the Bromsgrove Partnership will be revisited and refreshed to ensure it is fit for purpose to deliver the agreed priorities. A self-assessment will also be undertaken within the next six months.
- 5.3 The LSP has a governance framework, approved by Full Council and this will be reviewed and revised as appropriate over the next few months. There has been an increased link to Councillors and democratic accountability through the Leader of the District Council being appointed as Chair of the Bromsgrove Partnership Board in 2009 and through the Sustainable Community Strategy and Annual Reports being presented to Full Council and examined by the District Council's Performance Management Board.
- 5.4 The performance management framework has been streamlined. The Key Performance Indicators and Community Improvement Plan has been combined which has led to a new improved High Level Action Plan format. More work will also be undertaken in relation to ensuring we have effective arrangements in place for reporting and reviewing performance, with particular focus around challenging performance and challenging financial input.
- 5.5 Following a review of the consultation and community engagement that the LSP partners have carried out, there will be targeted community engagement to ensure all sections of the community have a voice. There will be a particular focus on the business sector, migrant workers and the working population, as these are the groups which have been identified as sections where there have been little community engagement undertaken by LSP partners.
- 5.6 Some funding will be available from various sources to assist with the work that is ongoing in the theme groups, which ultimately contribute to the LAA targets. This includes funding from Bromsgrove District Council, Worcestershire Primary Care Trust and Bromsgrove District Housing Trust. Bids will also be made for other sources of funding where appropriate.
- 5.7 A three-year service level agreement (2008/09-2010/11) to the Bromsgrove and Redditch Network (BARN) will be monitored and reviewed to ensure that the voluntary and community sector continues to have a strategic voice in the LSP arena in the District.
- 5.8 The Bromsgrove Partnership will exercise its leadership and governing role by continuing to identify and articulate the needs and aspirations of local communities. It will use its understanding to ensure information, consultation and involvement opportunities are provided on the right issues, targeted at the right people, and accessible to those the Partnership is trying to reach.

6. Glossary

AAP	Area Action Plan
ASB	Anti-Social Behaviour
BAP	Biodiversity Action Plan
BARN	Bromsgrove and Redditch Network
BCS	British Crime Survey
BDC	Bromsgrove District Council
BDHT	Bromsgrove District Housing Trust
BECAN	Bromsgrove Extended Community Activity Network
BURT	Bromsgrove Urban and Rural Transport
BYHF	Bromsgrove Youth Homelessness Forum
CDRP	Crime and Disorder Reduction Partnership (<i>also known as CSP</i>)
CLG	Communities and Local Government
CO ₂	Carbon Dioxide
CSP	Community Safety Partnership (<i>also known as CDRP</i>)
DDA	Disability Discrimination Act
DECC	Department of Energy and Climate Change
Defra	Department of Environment, Food and Rural Affairs
FE	Further Education
FESCo	Further Education Sports Coordinator
GIS	Geographical Information System
GOWM	Government Office West Midlands
HECA	Home Energy Conservation Act
IEWM	Improvement and Efficiency West Midlands
IPTS	Integrated Passenger Transport Strategy

LAA	Local Area Agreement
LNP	Local Neighbourhood Partnerships
LSP	Local Strategic Partnership <i>(known in this District as the 'Bromsgrove Partnership')</i>
NEET	Not in Employment, Education or Training
NHS	National Health Service
NI	National Indicator
PACT	Partners and Communities Together
PCT	Primary Care Trust
PPO	Prolific and other Priority Offenders Strategy
RSL	Registered Social Landlord
SAP	Standard Assessment Procedure (Energy Rating)
SPD	Supplementary Planning Document
TFMV	Theft from motor vehicle
TOMV	Theft of motor vehicle
VAT	Value Added Tax
VCS	Voluntary and Community Sector
WCC	Worcestershire County Council
WEEAC	Warwickshire Energy Efficiency Advice Centre <i>(now known as 'Act on Energy')</i>
WM	West Midlands

APPENDIX 1: Bromsgrove Partnership Structure 2008/09



Purple = Bromsgrove Partnership Objectives which align with the LAA

Green = Bromsgrove Partnership Theme Groups and Project Groups. (NB: Sub-Groups have not been included in this diagram).

APPENDIX 2: High Level Action Plans showing performance during 2008/09

SUSTAINABLE COMMUNITY STRATEGY 2008-2011 KEY PERFORMANCE INDICATORS MARCH 2009 UPDATE

This document is to be used for progress reporting and assessment of status using the Local Area Agreement designations based upon examination of current performance/activity, potential for improvement and risk by the Lead Partner using the following criteria:

On Target	Indicates performance at the expected position – GREEN
Borderline	Indicates performance which is marginally below the expected position – AMBER
Below Target	Indicates poor performance, significantly below the expected position. The Partnership should consider remedial action that may be required – RED
No Status	Indicates that the outcome/indicator is in a subsequent year or the predicted start date has not arrived – CLEAR

**COMMUNITIES THAT ARE SAFE AND FEEL SAFE HIGH LEVEL ACTION PLAN
THEME CHAIR: DAVE SHAW**

PRIORITY: TO REDUCE FEAR AND PERCEPTION OF CRIME

Key Deliverable (Outcomes)	Baseline	Outputs	How do we know we are getting there?	Completion Date	Resource	Lead Partner	LAA Link	Progress to Date March 2009	Status
People's perception of anti social behaviour matches reality	In 2007/08, 56% of people surveyed expressed a fear of crime (50% expressed a fear of ASB**) This Baseline will change in accordance with the LAA target NI17 which is 12.3% for Bromsgrove District <i>(**2007 fear of crime survey)</i>	Year on year reduction of fear of crime and ASB* *Because we are dealing with perception, it is difficult to set a target, so we are seeking to continuously improve. A target may be adopted in relation to NI17 which is currently set at 11.4% for Bromsgrove	Survey result, PACT priorities eg local policing and local reassurance, face to face surveys, campaign via GNN in place publicised with CSPs	End April 2009 (repeat annually)	CSP – All partners	Police	NI 17 NI 21	Questions asked within the 2008/09 West Mercia Crime and Safety Survey were different to those asked in the 2007/08 causing difficulty in comparing results. There are currently no plans amongst the Worcestershire CSP's to continue the funding of the West Mercia Crime and Safety Survey due to its inconsistency in design. CSP will be measuring performance in relation to perceptions through the Place Survey and BDC Household Survey.	

**COMMUNITIES THAT ARE SAFE AND FEEL SAFE HIGH LEVEL ACTION PLAN
THEME CHAIR: DAVE SHAW**

PRIORITY: TO REDUCE FEAR AND PERCEPTION OF CRIME

Key Deliverable (Outcomes)	Baseline	Outputs	How do we know we are getting there?	Completion Date	Resource	Lead Partner	LAA Link	Progress to Date March 2009	Status
				End April 2010				No action at this time	
				End April 2011				No action at this time	

**COMMUNITIES THAT ARE SAFE AND FEEL SAFE HIGH LEVEL ACTION PLAN
THEME CHAIR: DAVE SHAW**

PRIORITY: TO REDUCE FEAR AND PERCEPTION OF CRIME

Key Deliverable (Outcomes)	Baseline	Outputs	How do we know we are getting there?	Completion Date	Resource	Lead Partner	LAA Link	Progress to Date March 2009	Status
Reduction in anti-social behaviour in key areas* *(Defined via use of dedicated CSP Analyst to highlight and prioritise those areas).	6239 reported incidents of ASB in 2006/07 and 6135 in 2007/08 in key areas. 2006/07 figure should read 6248 Sourced from: WMP Crime Stats and 2007/08 6095	2% reduction* on 06/07 figures by 09/10** (from 6239 to 6114) If the baseline becomes 6248 the 2% reduction for 09/10 would become 6123	CSP activity to tackle ASB. ASB letters delivered Local policing activity through PACT publicity Monthly stats for Bromsgrove District confirming levels of reported ASB by Ward	31 st March 2009	ASB Co-ordinator (police) CSP partners LAA funding if required	Police	NI17 NI 21	6151 incidents of ASB were recorded for 08/09 which amounts to a 1.5% decrease from 06/07. Youth Related ASB and Alcohol Related ASB have now become 2 of the 4 priorities in the CSP Partnership Plan. During 2008/09 we have completed several joint CSP and policing operations involving high visibility patrols within key areas including Town Centre, Sanders Park and St. Chad's Park in Rubery. The CSP Tasking Group has also dealt with emerging issues of ASB each month as they have been identified by the CDRP analyst.	

**COMMUNITIES THAT ARE SAFE AND FEEL SAFE HIGH LEVEL ACTION PLAN
THEME CHAIR: DAVE SHAW**

PRIORITY: TO REDUCE FEAR AND PERCEPTION OF CRIME

Key Deliverable (Outcomes)	Baseline	Outputs	How do we know we are getting there?	Completion Date	Resource	Lead Partner	LAA Link	Progress to Date March 2009	Status
		2% reduction* on 06/07 figures by 09/10** (from 6239 to 6114 (4% in total by 31 st March 2010) These figures may also need amending,		31 st March 2010				No action at this time.	

**COMMUNITIES THAT ARE SAFE AND FEEL SAFE HIGH LEVEL ACTION PLAN
THEME CHAIR: DAVE SHAW**

PRIORITY: TO REDUCE FEAR AND PERCEPTION OF CRIME

Key Deliverable (Outcomes)	Baseline	Outputs	How do we know we are getting there?	Completion Date	Resource	Lead Partner	LAA Link	Progress to Date March 2009	Status
Improved safety through reduced recorded crime in serious acquisitive crime categories	2007/08: 1132 crimes sourced from IQuanta	Target 975 crimes by 2011: -13.9% reduction in acquisitive crime (including burglary, dwelling, robbery, TOMV and TFMV)	CSP tasking activity PPO strategy for re-offending	31 st March 2009	Police/ partners LAA funding for specific schemes If required	Police	NI20 NI21	Reported offences reduced to 1243 in 2008/09 – an increase of 9.8% compared to 2007/08 Unfortunately an increase in dwelling burglary and theft from motor vehicles has resulted in being off target. West Mercia Police have carried out high visibility patrols in hotspots areas for burglary and vehicle offences. Awareness raising campaigns have also been carried out including the vulnerable vehicle scheme, 'safe and secure' and active involvement in offender management.	

**COMMUNITIES THAT ARE SAFE AND FEEL SAFE HIGH LEVEL ACTION PLAN
THEME CHAIR: DAVE SHAW**

PRIORITY: TO REDUCE FEAR AND PERCEPTION OF CRIME

Key Deliverable (Outcomes)	Baseline	Outputs	How do we know we are getting there?	Completion Date	Resource	Lead Partner	LAA Link	Progress to Date March 2009	Status
				31 st March 2010				No action at this time	
				31 st March 2011				No action at this time	

**BETTER ENVIRONMENT HIGH LEVEL ACTION PLAN
THEME GROUP CHAIR: RACHEL JONES**

PRIORITY: To reduce greenhouse gas emissions and adapt to impacts of climate change

Key Deliverables (Outcomes)	Baseline	Outputs	How do we know we are getting there?	Completion Date	Resource	Lead Partner	LAA Link	Progress to date March 2009	Status
Reduce CO ₂ to improve energy efficiency – 9% reduction by 31.3.2011	6.5 tonnes total emissions per capita (2005 baseline)	Develop a Sustainability Framework for BDC	Framework developed	31 st March 2009	BDC	BDC	NI186	Action plan underway linked to County CC plan. Current 186 data shows that CO ₂ has increased, even though actions are being completed (data is 2006 will not get current data until 2011)	
	HECA (Home Energy Conservation Act) % improvement in energy efficiency 2006/07 24.6%	Develop and run a home insulation scheme	Number of measures installed (225 installations)	31 st March 2009	BDC	BDC Act on Energy (was known as WEEAC)	NI186 NI187	Scheme has been run and will continue into 2009/10. Match funding has been levered in.	

**BETTER ENVIRONMENT HIGH LEVEL ACTION PLAN
THEME GROUP CHAIR: RACHEL JONES**

PRIORITY: To reduce greenhouse gas emissions and adapt to impacts of climate change

Key Deliverables (Outcomes)	Baseline	Outputs	How do we know we are getting there?	Completion Date	Resource	Lead Partner	LAA Link	Progress to date March 2009	Status
		Use DEFRA questionnaire data to establish indicative Standard Assessment Procedure (SAP) (national energy rating where 1 = bad and 100 = excellent) ratings across the District	Baseline SAP % below 35 and above 65 established	31 st January 2009	BDC	Act on Energy (was known as WEEAC)	NI187	Baseline data collated and targets set of 1.5% yr on yr until end of LAA	

**BETTER ENVIRONMENT HIGH LEVEL ACTION PLAN
THEME GROUP CHAIR: RACHEL JONES**

PRIORITY: To reduce greenhouse gas emissions and adapt to impacts of climate change

Key Deliverables (Outcomes)	Baseline	Outputs	How do we know we are getting there?	Completion Date	Resource	Lead Partner	LAA Link	Progress to date March 2009	Status
	New legislation October 2008	Ensure Display Energy Certificates are displayed in public buildings over 1000sq.m (NB Links to NI185)	Number of DEC displayed in public buildings	31 st March 2009	BDC	LSP Theme Group	NI186	Relevant partner organisations have DEC's in place	
		Develop village 'Go Greener' schemes	Number of villages participating – 3 to be targeted	31 st March 2009	BDC and LSP Theme Group partners	BDC Act on Energy (was known as WEEAC)	NI186 NI188	2 villages have taken part plus a week long event in local school	

**BETTER ENVIRONMENT HIGH LEVEL ACTION PLAN
THEME GROUP CHAIR: RACHEL JONES**

PRIORITY: To reduce greenhouse gas emissions and adapt to impacts of climate change

Key Deliverables (Outcomes)	Baseline	Outputs	How do we know we are getting there?	Completion Date	Resource	Lead Partner	LAA Link	Progress to date March 2009	Status
		Develop and deliver Energy Efficiency Scheme for Private Rented Accommodation	Funds allocated, grants promoted and available	31 st March 2009	BDC	BDC	NI186 NI187	Ran as part of main scheme	
Travel Plan for BDC (council only)	2005 baseline data (to be reviewed)	Travel Plan developed (NB Links to NI185)	Ratified by Councillors	31 st March 2009	BDC	BDC	NI186 NI188	Completed and agreed by councillors	
		Reduction in private car usage	10% of staff car sharing	31 st March 2010	BDC	BDC with support from WCC	NI186	No action at this time	
			No. staff travelling to work via other modes of travel	31 st March 2011	BDC	BDC with support from WCC	NI186	No action at this time	

**BETTER ENVIRONMENT HIGH LEVEL ACTION PLAN
THEME GROUP CHAIR: RACHEL JONES**

PRIORITY: To reduce greenhouse gas emissions and adapt to impacts of climate change

Key Deliverables (Outcomes)	Baseline	Outputs	How do we know we are getting there?	Completion Date	Resource	Lead Partner	LAA Link	Progress to date March 2009	Status
Travel Plan for Bromsgrove District	Figures for district need to be established	Sign up by external organisations	Baseline data established	31 st March 2010	BDC	BDC WCC	NI186	No action at this time	
			Numbers signed up to Plan.	31 st March 2011	BDC	BDC WCC	NI186	No action at this time	
Bromsgrove District Council adapts to impacts of Climate Change. Achieve Level 2 of NI188 by 31.3.2011	Benchmark current climate change activities	Establish current situation	Benchmarking undertaking	31 st December 2008	BDC WCC	Chair of Theme Group	NI188	Not undertaken due to previous exercise in 06 may look to update is considered a priority	
	Ensure adaptation issues are developed within BDC Core Strategy	a) Ensure that all developments can cope with increases in temperature and drier/wetter weather	Included in Core Strategy	31 st March 2010	BDC	BDC	NI186 NI188	Added into draft core strategy. Funding proposal for drainage engineer sent to council	

**BETTER ENVIRONMENT HIGH LEVEL ACTION PLAN
THEME GROUP CHAIR: RACHEL JONES**

PRIORITY: To reduce greenhouse gas emissions and adapt to impacts of climate change

Key Deliverables (Outcomes)	Baseline	Outputs	How do we know we are getting there?	Completion Date	Resource	Lead Partner	LAA Link	Progress to date March 2009	Status
		b) Ensure that all new developments incorporate sustainable drainage systems	Included in Core Strategy	31 st March 2010	BDC	BDC	NI188	No action at this time	
		c) Develop renewable energy policy for new developments	Included in Core Strategy	31 st March 2010	BDC	BDC	NI188	No action at this time	

**BETTER ENVIRONMENT HIGH LEVEL ACTION PLAN
THEME GROUP CHAIR: RACHEL JONES**

PRIORITY: Reduce waste, increase recycling and ensure cleaner, greener and safer public spaces

Key Deliverables (Outcomes)	Baseline	Outputs	How do we know we are getting there?	Completion Date	Resource	Lead Partner	LAA Link	Progress to date March 2009	Status	
Increase in tonnage of waste sent by BDC for recycling and a decrease in tonnage of residual waste sent for disposal	Measured by NI191, residual household waste per household waste (07/08 baseline 579.94kg)	Increased reuse, recycling and composting of household waste LAA targets to be confirmed	Improvement monitored and reported monthly. NB: Strategy runs until 2034. Figures reported annually	31 st March 2009	BDC	BDC	NI193	579.80Kg Outturn better than target.		
				31 st March 2010				Waiting data		
				31 st March 2011				Waiting data		
				31 st March 2009				43.5% Missed target by 0.9%		
	NI192, % of household waste sent for reuse, recycling and composting (07/08 baseline 43.57%)	Increased reuse, recycling and composting of household waste LAA targets to be confirmed			31 st March 2010				Waiting data	
					31 st March 2011				Waiting data	

**BETTER ENVIRONMENT HIGH LEVEL ACTION PLAN
THEME GROUP CHAIR: RACHEL JONES**

PRIORITY: Reduce waste, increase recycling and ensure cleaner, greener and safer public spaces

Key Deliverables (Outcomes)	Baseline	Outputs	How do we know we are getting there?	Completion Date	Resource	Lead Partner	LAA Link	Progress to date March 2009	Status
Clean and safe streets	NI195 Improved street and environmental cleanliness a) litter 11% b) Graffiti 5% c) Fly posting 1% Customer Panel survey: Customer satisfaction of cleanliness of public open spaces (07/08 baseline 37%)	Joined up working between Street Scene and Community Services	Improved performance monitored and reported annually	Annual report 31 st March 2009	BDC	BDC	NI195	Litter 6% Graffiti 2% Fly posting 0%	
				Annual Report 31 st March 2010				Waiting data	
				Annual Report 31 st March 2011				Waiting data	

**BETTER ENVIRONMENT HIGH LEVEL ACTION PLAN
THEME GROUP CHAIR: RACHEL JONES**

PRIORITY: Protect and improve the natural environment

Key Deliverables (Outcomes)	Baseline	Outputs	How do we know we are getting there?	Completion Date	Resource	Lead Partner	LAA Link	Progress to date March 2009	Status
Translation of revised county level BAP into local action to protect and improve biodiversity	BAP review under way	Worcestershire BAP revised (NB Links NI197)	Progress on BAP revision and priority setting	July 2008 for BAP review	Worcs Biodiversity Partnership Natural England GOWM	WBP	NI188	BAP review completed by CC	
		Biodiversity Programme and Water Vole Strategy revisited and implemented	Review of action taken so far and identification of further action required to protect/enhance water voles and their habitat in the District.	31 st March 2010	BDC	BDC	NI188	Not undertaken. Need to decide if this is a priority action of LSP and need to look to include in an officer workload	

**BETTER ENVIRONMENT HIGH LEVEL ACTION PLAN
THEME GROUP CHAIR: RACHEL JONES**

PRIORITY: Protect and improve the natural environment

Key Deliverables (Outcomes)	Baseline	Outputs	How do we know we are getting there?	Completion Date	Resource	Lead Partner	LAA Link	Progress to date March 2009	Status
	Previous BDC Biodiversity Programme dated 2000	Revision of Biodiversity Programme	BDC Biodiversity Programme revised (taking into account obligations under Natural England and Rural Communities Act 2006 and new actions arising from the Biodiversity Action Plan	31 st March 2010	BDC with assistance from Worcs Biodiversity Partnership	BDC	NI188	No action at this time	
BDC to sign up to West Midlands Biodiversity Action Plan and Pledge	Discussion paper to Council	Sign up to plan and pledge	BDC commitment	31 st December 2008	BDC	BDC	NI188	BDC signed up to plan and pledge	

**BETTER ENVIRONMENT HIGH LEVEL ACTION PLAN
THEME GROUP CHAIR: RACHEL JONES**

PRIORITY: Protect and improve the natural environment

Key Deliverables (Outcomes)	Baseline	Outputs	How do we know we are getting there?	Completion Date	Resource	Lead Partner	LAA Link	Progress to date March 2009	Status
One Local Nature Reserve	No Local Nature Reserves and no district specific biodiversity projects identified	LNR designation: 1 LNR in District	Work being carried out towards assessing potential for LNRs and development of other projects using BAP and Habitat Inventory	31 st March 2010 (end of period for LNR designation)	BDC and Worcs Biodiversity Partnership	BDC	NI188	No action at this time	
Special Wildlife sites in the District are being managed appropriately	To be confirmed. Work to be done via Theme Group	Increase in number of Special Wildlife Sites under active conservation management (NB Links to NI197) (actual figure to be confirmed)	Special Wildlife Sites are entered into conservation management grant schemes or are receiving and acting upon other appropriate advice	31 st March 2010	BDC Worcs Biodiversity Partnership Special Wildlife Site Partnership	Special Wildlife Site Partners hip		No action at this time	

**TOWN CENTRE REDEVELOPMENT HIGH LEVEL ACTION PLAN
THEME GROUP CHAIR: PHIL STREET**

PRIORITY: Town Centre Redevelopment

Key Deliverables (Outcomes)	Baseline	Outputs	How do we know we are getting there?	Completion Date	Resource	Lead Partner	LAA Link	Progress to date March 2009	Status
Resident and community involvement	Legislative requirement to consult with community regarding major planning development	Carry out Issues and Options and Preferred Option consultation	Consultation documents produced at each stage and consultations completed	Issues and Options consultation completed by 31 st July 2008	BDC	BDC	N/A	Completed.	
				Produce Area Action Plan by 31 st March 2011	BDC	BDC	N/A	No action at this time	
Secure active partnership involvement in town centre redevelopment	Strengthen partnership involvement	Maintain partnership involvement on steering group and progress partnership developments	High level attendance by partners' representatives at steering group	31 st March 2009	BDC Police Fire and Rescue Service County Council Health Service	BDC/ County Council	N/A	Range of partners involved in Steering Group including Police, County and Fire Service.	

**TOWN CENTRE REDEVELOPMENT HIGH LEVEL ACTION PLAN
THEME GROUP CHAIR: PHIL STREET**

PRIORITY: Town Centre Redevelopment

Key Deliverables (Outcomes)	Baseline	Outputs	How do we know we are getting there?	Completion Date	Resource	Lead Partner	LAA Link	Progress to date March 2009	Status
			New developments in town centre led by partners	31 st March 2011	BDC Police Fire and Rescue Service County Council Health Service	BDC/ County Council	N/A	Work continuing on improving bus station, toilet block. Progress with Parkside Health Centre.	
Expand retail offer in town centre	Low level of retail activity and no new retail opportunities	Progress retail developments in the town centre	Reach agreement with retailers regarding sites and planning permission	Agree development on market hall site for new development by 31 st December 2008	Build on issues and options preferred option work	BDC and WCC	N/A	Discussion taking place with retailers and with other local authorities re how they extended their retail offer	
				Promote one other retail development by 31 st March 2010	Build on issues and options preferred option work	BDC and WCC	N/A	No action at this time.	

**LONGBRIDGE HIGH LEVEL ACTION PLAN
THEME GROUP CHAIR: PHIL STREET**

PRIORITY: Longbridge Regeneration

Key Deliverables (Outcomes)	Baseline	Outputs	How do we know we are getting there?	Completion Date	Resource	Lead Partner	LAA Link	Progress to date March 2009	Status
Creation of employment opportunities at Cofton Centre	Work with developer to secure businesses on remaining 18 acres	A minimum of 3 businesses attracted to occupy business units at Cofton Centre	3 businesses per year have entered into an agreement to occupy units at Cofton Centre	31 st March 2009	BDC – Information and monitoring by Economic Development Manager	BDC	NI152 NI166 NI171	Recession has affected this action although a company is in negotiation for a warehouse unit	
				31 st March 2010	BDC – Information and monitoring by Economic Development Manager	BDC	NI152 NI166 NI171	No action at this time	

**LONGBRIDGE HIGH LEVEL ACTION PLAN
THEME GROUP CHAIR: PHIL STREET**

PRIORITY: Longbridge Regeneration

Key Deliverables (Outcomes)	Baseline	Outputs	How do we know we are getting there?	Completion Date	Resource	Lead Partner	LAA Link	Progress to date March 2009	Status
				31 st March 2011	BDC – Information and monitoring by Economic Development Manager	BDC	NI152 NI166 NI171	No action at this time	
Monitor and disseminate information on Area Action Plan	AAP submitted to Secretary of State	AAP is approved by Planning Inspectorate	AAP successfully passes through EiP stage	31 st March 2010	AAP document	BDC and Birmingham City Council	N/A	No action at this time	

**HEALTH AND WELL BEING HIGH LEVEL ACTION PLAN
THEME GROUP CHAIR: LIZ ALTAY**

PRIORITY: Physical Activity

Key Deliverables (Outcomes)	Baseline	Outputs	How do we know we are getting there?	Completion Date	Resource	Lead Partner	LAA Link	Progress to date March 2009	Status
"Add years to life and life to years" – increase life expectancy and reduce morbidity	Only 22% of adults take exercise 3 or more times a week <i>(Baseline from 2006 "Active People" Survey)</i>	1% year on year increase in physical activity participation annually (adults) <i>(Active People Survey will be repeated in 2009)</i>	Map/audit all current sport and physical activity	31 st March 2009	CSN Funding	BECAN	NI8 NI121	Mapping has commenced through BECAN and CYP theme group. Increase in adult physical activity by 3.9% (to 25.6%) compared to baseline and is 4.1% above national average.	
			Develop website/ brochures for signposting	31 st March 2010	Theme Group Funding	PCT		Website/brochures to be developed during 09/10 by CYP theme group	

**HEALTH AND WELL BEING HIGH LEVEL ACTION PLAN
THEME GROUP CHAIR: LIZ ALTAY**

PRIORITY: Physical Activity

Key Deliverables (Outcomes)	Baseline	Outputs	How do we know we are getting there?	Completion Date	Resource	Lead Partner	LAA Link	Progress to date March 2009	Status
			Increase leisure centre usage by 2%	31 st March 2010	BDC	BDC		New gym at Dolphin Centre opened 06/04/09. Activity Referral scheme launched.	

**HEALTH AND WELL BEING HIGH LEVEL ACTION PLAN
THEME GROUP CHAIR: LIZ ALTAY**

PRIORITY: Physical Activity

Key Deliverables (Outcomes)	Baseline	Outputs	How do we know we are getting there?	Completion Date	Resource	Lead Partner	LAA Link	Progress to date March 2009	Status
			Roll out of new initiatives: a) Best Foot Forward Walks for Health b) Physical Activity Referral Scheme c) Try New Things d) Keep On Moving e) Angling	31 st March 2009	BECAN School Sports Partnership Theme Group Funding	BECAN		a) Project Coordinator recruited Jan 09 b) Physical activity referral scheme launched April 09 c) FESCo ²⁸ in post and programmes commenced d) Programmes now up and running and exceeded numbers expected e) 3, 9 week programmes delivered	
				31 st March 2010			No action at this time		

²⁸ Further Education Sports Co-ordinator

**HEALTH and WELL BEING HIGH LEVEL ACTION PLAN
THEME GROUP CHAIR: LIZ ALTAY**

PRIORITY: Smoking

Key Deliverables (Outcomes)	Baseline	Outputs	How do we know we are getting there?	Completion Date	Resource	Lead Partner	LAA Link	Progress to date March 2009	Status
Reduce prevalence of smoking	24% of population smoke (national figures)	Reduce adult smoking rates by 3% by 2010	Continue to support employers and retailers with smoking ban in workplace/ underage sales	31 st March 2009	LSP Partners	PCT	NI121 NI123	Smoking project group providing ongoing support. Baseline re under age sales being established.	
				31 st March 2010				No action at this time	

**HEALTH and WELL BEING HIGH LEVEL ACTION PLAN
THEME GROUP CHAIR: LIZ ALTAY**

PRIORITY: Smoking

Key Deliverables (Outcomes)	Baseline	Outputs	How do we know we are getting there?	Completion Date	Resource	Lead Partner	LAA Link	Progress to date March 2009	Status
		Increase numbers successfully quitting at 4 weeks	Develop Homes and Business Heartsmart Award	31 st December 2008				Heartsmart homes launched in Children's centres ASDA, BDHT and BDC have been approached and have shown interest in Business Award.	

**HEALTH and WELL BEING HIGH LEVEL ACTION PLAN
THEME GROUP CHAIR: LIZ ALTAY**

PRIORITY: Smoking

Key Deliverables (Outcomes)	Baseline	Outputs	How do we know we are getting there?	Completion Date	Resource	Lead Partner	LAA Link	Progress to date March 2009	Status
			Develop opportunities to provide local smoking cessation	31 st March 2010	Theme Group Funding	PCT		Funding secured for a six month pilot peer mentorship, smoking cessation and prevention scheme delivered from the Trunk. Smoking cessation services now available at Children's Centres.	

**HEALTH and WELL BEING HIGH LEVEL ACTION PLAN
THEME GROUP CHAIR: LIZ ALTAY**

PRIORITY: Smoking

Key Deliverables (Outcomes)	Baseline	Outputs	How do we know we are getting there?	Completion Date	Resource	Lead Partner	LAA Link	Progress to date March 2009	Status
			Brief intervention training for LSP partners with contacts with clients/ patients/ customers	31 st March 2009	Theme Group Funding	PCT		Ongoing. Staff trained in leisure services, pharmacies and Children Centres- to continue with other front line staff from PCT, Housing Trusts, Neighbourhood Wardens and other community based staff.	

**HEALTH and WELL BEING HIGH LEVEL ACTION PLAN
THEME GROUP CHAIR: LIZ ALTAY**

PRIORITY: Smoking

Key Deliverables (Outcomes)	Baseline	Outputs	How do we know we are getting there?	Completion Date	Resource	Lead Partner	LAA Link	Progress to date March 2009	Status
		Reduce the inequality in smoking rates in more deprived areas	Determine smoking rates by deprivation quintile and target specific areas	31 st March 2010	Theme Group Funding	PCT		Actions to commence April 2009	

**HEALTH and WELL BEING HIGH LEVEL ACTION PLAN
THEME GROUP CHAIR: LIZ ALTAY**

PRIORITY: Smoking

Key Deliverables (Outcomes)	Baseline	Outputs	How do we know we are getting there?	Completion Date	Resource	Lead Partner	LAA Link	Progress to date March 2009	Status
Improve mental health	6.2% of adults registered with Bromsgrove GPs with a diagnoses of depression (2006) Adult mortality rate from suicide 8.61 per 100,000 (2004/06)	Establish Local Government and NHS as exemplars in employment practice by improving employment practice and promoting positive mental health at work policies	Review of current practice against evidence based positive mental health policies	31 st October 2009	All Partners Theme Group Fund	PCT MHPT	NI142 NI150	The theme group has met with the local Mental Health Network to examine the evidence base and identify gaps in local Community settings The Mental Health Network will be setting up a local group in Bromsgrove during 09/10	

**HEALTH and WELL BEING HIGH LEVEL ACTION PLAN
THEME GROUP CHAIR: LIZ ALTAY**

PRIORITY: Smoking

Key Deliverables (Outcomes)	Baseline	Outputs	How do we know we are getting there?	Completion Date	Resource	Lead Partner	LAA Link	Progress to date March 2009	Status
			Integrate local planning and activity with 'wellness works' workplace strategy	31 st March 2010				An action plan to roll out "Wellness Works" is being developed to ensure an integrated approach across all departments involving health and safety departments, delivering a programme within BDC.	

**HEALTH and WELL BEING HIGH LEVEL ACTION PLAN
THEME GROUP CHAIR: LIZ ALTAY**

PRIORITY: Smoking

Key Deliverables (Outcomes)	Baseline	Outputs	How do we know we are getting there?	Completion Date	Resource	Lead Partner	LAA Link	Progress to date March 2009	Status
			Develop and deliver mental health awareness promotion and signposting initiatives for wide range of community based stakeholders	31 st March 2011				Mental health awareness workshop held March 09	

**HEALTH AND WELL BEING HIGH LEVEL ACTION PLAN
THEME GROUP CHAIR: LIZ ALTAY**

PRIORITY: Older People

Key Deliverables (Outcomes)	Baseline	Outputs	How do we know we are getting there?	Completion Date	Resource	Lead Partner	LAA Link	Progress to date March 2009	Status
Improve health and well being of older people through ageing well type scheme	None	To develop an "Age Well" scheme within Bromsgrove District	Integrated referral pathway developed which will include any existing services and identify gaps in services	31 st March 2010	All partners	Non-statutory agencies for older people	NI121 NI142	Developmental background work to underpin development of local ageing well scheme continuing in conjunction with Age Concern and Older People's Theme Group. Act on Energy (previously known as WEEAC) providing affordable warmth training sessions for front line staff in Bromsgrove	

**HEALTH AND WELL BEING HIGH LEVEL ACTION PLAN
THEME GROUP CHAIR: LIZ ALTAY**

PRIORITY: Alcohol

Key Deliverables (Outcomes)	Baseline	Outputs	How do we know we are getting there?	Completion Date	Resource	Lead Partner	LAA Link	Progress to date March 2009	Status
Local Alcohol Misuse Reduction Action Plan	<p>Alcohol specific hospital admissions for males 275.41 per 100,000 (2005/06)</p> <p>Alcohol specific hospital admissions for females 127.64 per 100,000 (2005/06)</p> <p>Alcohol specific hospital admissions under 18s 69.17 per 100,000 (2005/06)</p>	Reduce alcohol harm related hospital admissions	Set up partner group. Map local issues. Action plan to include ill health, crime and disorder, under age drinking, working with the industry (pubs, clubs, shops), awareness raising	31 st March 2009	Theme Group funding	PCT Police	NI39	Partner group set up. Bromsgrove alcohol action plan developed March 09	

**CHILDREN AND YOUNG PEOPLE HIGH LEVEL ACTION PLAN
THEME GROUP CHAIR: ELAINE MORTIMORE**

PRIORITY: Healthy Lifestyles for Children and Young People

Key Deliverables (Outcomes)	Baseline	Outputs	How do we know we are getting there?	Completion Date	Resource	Lead Partner	LAA Link	Progress to date March 2009	Status
Support Children and Young People to Lead Healthy Lifestyles	Average percentage of obese children aged 4 to 11 years in Bromsgrove is 13%	By launching Bromsgrove's 'Cool to be Healthy' campaign we contribute to reducing the proportion of overweight and obese children to 2000 levels by 2020.	Obtain data from national measurement programme being operated locally by the PCT that has been in place since summer 2006. The programme aims to measure the height and weight of all primary school children in reception year (ages 4-5) and year 6 (ages 10-11).	31 st March 2009	PCT Childhood Obesity Strategy; Play Strategy; Extended Services; School Sport Trust Strategy; Healthy Schools Strategy	BDC / PCT	NI 56	Information on obesity received. Members of theme group collating information on activities that address exercise and diet.	

**CHILDREN AND YOUNG PEOPLE HIGH LEVEL ACTION PLAN
THEME GROUP CHAIR: ELAINE MORTIMORE**

PRIORITY: Healthy Lifestyles for Children and Young People

Key Deliverables (Outcomes)	Baseline	Outputs	How do we know we are getting there?	Completion Date	Resource	Lead Partner	LAA Link	Progress to date March 2009	Status
			Prepared Bromsgrove's 'Cool to be Healthy' campaign, launched leaflet and produced locally focussed guidelines	31 st March 2009	PCT Childhood Obesity Strategy; Play Strategy; Extended Services; School Sport Trust Strategy; Healthy Schools Strategy	BDC / PCT	NI 56	Work is taking place to collate information on activities that will form the basis of the 'Cool to be Healthy' initiative.	
			Receive monitoring data from PCT on latest obesity statistics	31 st March 2009	PCT	PCT	NI 56	2007/08 obesity stats made available to Theme Group after March.	
				31 st March 2010				2008/09 obesity stats due to be submitted to the Dept of Health Sept 2009	

**CHILDREN AND YOUNG PEOPLE HIGH LEVEL ACTION PLAN
THEME GROUP CHAIR: ELAINE MORTIMORE**

PRIORITY: Healthy Lifestyles for Children and Young People

Key Deliverables (Outcomes)	Baseline	Outputs	How do we know we are getting there?	Completion Date	Resource	Lead Partner	LAA Link	Progress to date March 2009	Status
				31 st March 2011				No action at this time	
			Hold a 'Cool to be Healthy' day in Bromsgrove	31 st March 2010	PCT Childhood Obesity Strategy; Play Strategy; Extended Services; School Sport Trust Strategy; Healthy Schools Strategy	BDC / PCT	NI 56	No action at this time	

**CHILDREN AND YOUNG PEOPLE HIGH LEVEL ACTION PLAN
THEME GROUP CHAIR: ELAINE MORTIMORE**

PRIORITY: Healthy Lifestyles for Children and Young People

Key Deliverables (Outcomes)	Baseline	Outputs	How do we know we are getting there?	Completion Date	Resource	Lead Partner	LAA Link	Progress to date March 2009	Status
			Hold a 'Cool to be Healthy' seminar for those working or involved with children and young people's health	31 st March 2011	PCT Childhood Obesity Strategy; Play Strategy; Extended Services; School Sport Trust Strategy; Healthy Schools Strategy	BDC / PCT	NI 56	No action at this time	

**CHILDREN AND YOUNG PEOPLE HIGH LEVEL ACTION PLAN
THEME GROUP CHAIR: ELAINE MORTIMORE**

PRIORITY: Children being involved and making a contribution

Key Deliverables (Outcomes)	Baseline	Outputs	How do we know we are getting there?	Completion Date	Resource	Lead Partner	LAA Link	Progress to date March 2009	Status
Promote Positive Involvement of Children and Young People in Decision Making	Current level of participation in decision making	By organising an annual Children and Young People Convention, the LSP will further experience of positive involvement. The LSP will encourage other organisations to promote positive involvement in decision making.	Collect data to set baseline for Bromsgrove on positive involvement in children and young people's organisations.	31 st March 2009	Worcestershire County Council Youth Support; Citizenship Strategy; Big Questionnaire results	Worcestershire County Council Youth Support / BDC	NI 110	The 'U decide' event was organised and held in January 2009 and a small group of young people submitted a bid to the DABID initiative (Youth Capital Fund).	
NB: Links also to Health and Well Being Theme Group Physical Activity element									

**CHILDREN AND YOUNG PEOPLE HIGH LEVEL ACTION PLAN
THEME GROUP CHAIR: ELAINE MORTIMORE**

PRIORITY: Children being involved and making a contribution

Key Deliverables (Outcomes)	Baseline	Outputs	How do we know we are getting there?	Completion Date	Resource	Lead Partner	LAA Link	Progress to date March 2009	Status
			Collect data from all schools, colleges and youth organisations in Bromsgrove on current opportunities for positive involvement for children and young people in decision making.	31 st March 2009	Worcestershire County Council Youth Support; Citizenship Strategy; Big Questionnaire results	BDC	NI 110	Awaiting information from the 'TellUs' survey undertaken by the Department for Children, Schools and Families (DCSF).	
			Organise a Bromsgrove Children and People's Convention.	31 st March 2009	LSP	BDC		Held 'U Decide' event in January 2009	
				31 st March 2010	LSP	BDC		No action at this time	
				31 st March 2011	LSP	BDC		No action at this time	

**CHILDREN AND YOUNG PEOPLE HIGH LEVEL ACTION PLAN
THEME GROUP CHAIR: ELAINE MORTIMORE**

PRIORITY: Children being involved and making a contribution

Key Deliverables (Outcomes)	Baseline	Outputs	How do we know we are getting there?	Completion Date	Resource	Lead Partner	LAA Link	Progress to date March 2009	Status
			Prepare a database on opportunities for positive involvement of children and young people in decision making.	31 st March 2010	TBC	BDC		No action at this time	
			Produce a leaflet for schools, colleges and youth organisations on promoting positive involvement of children and young people in decision making.	31 st March 2011	TBC	BDC	N I110	No action at this time	

**CHILDREN AND YOUNG PEOPLE HIGH LEVEL ACTION PLAN
THEME GROUP CHAIR: ELAINE MORTIMORE**

PRIORITY: Promoting children's well being

Key Deliverables (Outcomes)	Baseline	Outputs	How do we know we are getting there?	Completion Date	Resource	Lead Partner	LAA Link	Progress to date March 2009	Status
Promote well being through access to opportunities and sport	Set baseline through obtaining data on opportunities and support for children and young people aged 4 – 19 years	Increase awareness amongst children and young people in formal or informal activities and advice services	Collect data on informal and formal activities for children and young people	31 st March 2009	Big Questionnaire	BDC	NI 69 NI 110	Work is taking place to collate information on activities.	
			Collect data on sport services for children and young people and obtain sponsorship for 'Being Young in Bromsgrove' website	31 st March 2010	TBC	BDC	NI 110	No action at this time	
			Set up 'Being Young in Bromsgrove' website	31 st March 2011	TBC	BDC	NI 110	No action at this time	

**OLDER PEOPLE HIGH LEVEL ACTION PLAN
THEME GROUP CHAIR: ANN SOWTON**

PRIORITY: Older People have access to information and advice

Key Deliverables (Outcomes)	Baseline	Outputs	How do we know we are getting there?	Completion Date	Resource	Lead Partner	LAA Link	Progress to date March 2009	Status
Operate an effective directory of services for Older People	Increase in the number of older people who access information (no baseline)	Hold an information share event	Successful event facilitated	31 st March 2009	BARN BDC	Older Peoples Theme Group		Completed, review in June 09	
		Establish baseline of information available	Baseline established by identifying agencies to be involved, and information held	31 st March 2009	BARN BDC	Older Peoples Theme Group		Completed, review in June 09	
				31 st March 2009	BARN BDC	Older Peoples Theme Group	N/A	Completed	
				31 st March 2010				No action at this time	
		31 st March 2011	No action at this time						

**OLDER PEOPLE HIGH LEVEL ACTION PLAN
THEME GROUP CHAIR: ANN SOWTON**

PRIORITY: Access to services

Key Deliverables (Outcomes)	Baseline	Outputs	How do we know we are getting there?	Completion Date	Resource	Lead Partner	LAA Link	Progress to date March 2009	Status
Map outreach services provided by all agencies	To be determined by identification of existing services and gaps in services	Undertake survey by 30 th September 2008 to assess possible expansion	Survey undertaken	30 th September 2008	Older People's Theme Group	BARN BDC	N/A	Completed	
Older people access services more easily	Identify gaps and consider how they can be addressed or signposted to other theme groups as relevant	Review mapping twice each year and prioritise top 2 or 3 issues	Gaps identified and signposting happening on a regular basis. Increased number of services/gaps identified	31 st March 2009	Older People's Theme Group	BARN/BDC	NI2	Completed	
				31 st March 2010				No action at this time	
				31 st March 2011				No action at this time	

**OLDER PEOPLE HIGH LEVEL ACTION PLAN
THEME GROUP CHAIR: ANN SOWTON**

PRIORITY: Older People and Communication

Key Deliverables (Outcomes)	Baseline	Outputs	How do we know we are getting there?	Completion Date	Resource	Lead Partner	LAA Link	Progress to date March 2009	Status	
Older people have a greater voice	Establish baseline via questionnaire	Older people get their views heard	Survey older people (via Older People's Forum or other groups) and identify further communication strands	31 st March 2009	Older People's TG	BARN BDC	NI2	Deferred due to focus groups held by BDC		
				31 st March 2010				No action at this time		
				31 st March 2011				No action at this time		
			10 older people recruited as older people's champions	30 th September 2009					On target, 3 already recruited	
			Publicise local events, publicity campaigns etc	31 st March 2009					Achieved	
				31 st March 2010					No action at this time	
				31 st March 2011					No action at this time	
			Promote national, regional and local campaigns	31 st March 2009					Achieved	
				31 st March 2010					No action at this time	
				31 st March 2011					No action at this time	

**HOUSING HIGH LEVEL ACTION PLAN
THEME GROUP CHAIR: MIKE BROWN**

PRIORITY: Responding to Housing Market

Key Deliverables (Outcomes)	Baseline	Outputs	How do we know we are getting there?	Completion Date	Resource	Lead Partner	LAA Link	Progress to date March 2009	Status
Comprehensive understanding of the Housing Market and Housing demand/supply within Bromsgrove	Fordham Housing Needs Survey 2004	Complete Housing Market Assessment for Bromsgrove District and produce new Housing Strategy	Project Plan Agreed and Funding in place	July 2008	BDC Budgets RSLs operating in Bromsgrove District Budgets Approx £50K	BDC Strategic Housing Manager supported by RSLs	NI154 NI155	Study completed - presentation to Council 24 th Nov 08	
		Produce new Housing Strategy		September 2008				BDC	

**HOUSING HIGH LEVEL ACTION PLAN
THEME GROUP CHAIR: MIKE BROWN**

PRIORITY: Complementary Housing and Planning Policy

Key Deliverables (Outcomes)	Baseline	Outputs	How do we know we are getting there?	Completion Date	Resource	Lead Partner	LAA Link	Progress to date March 2009	Status
Review of Planning Policy to support housing demand	Current Planning and Housing Strategies	Local Planning Policy fully complements and supports BDC priority for affordable Housing	Preferred option Core Strategy Affordable housing SPD Produced and consulted on.	October 2008	BDC Strategic Planning and Councillors	BDC Head of Planning and Environment Services	NI154 NI155	Draft core strategy consultation period ended February 2009. Next stage delayed pending outcome of Regional Spatial Strategy (RSS) process.	

**HOUSING HIGH LEVEL ACTION PLAN
THEME GROUP CHAIR: MIKE BROWN**

PRIORITY: Complementary Housing and Planning Policy

Key Deliverables (Outcomes)	Baseline	Outputs	How do we know we are getting there?	Completion Date	Resource	Lead Partner	LAA Link	Progress to date March 2009	Status
			Affordable Housing SPD adopted	February 2009	BDC Strategic Planning and Councillors	BDC Head of Planning and Environment Services	NI154 NI155	Process significantly delayed by Regional Spatial Strategy (RSS) work.	
Delivery of Affordable Housing in Bromsgrove and Rural Areas	Tenure % of affordable housing BDC 11% is compared with average for the West Midlands and England and Wales of 21%, showing a minimum shortfall of 10%. (NHF Source)	240 units built (Outcome measure will be reviewed against results of Housing Demand Survey and targets set in LAA)	Support applications for affordable housing 80 units per year. (Target to be reviewed against results of Housing Demand Survey)	31 st March 2010	BDC Planning Team Partner DSLs/Social Housing Grant	BDC Strategic Housing Manager		No action at this time	

**HOUSING HIGH LEVEL ACTION PLAN
THEME GROUP CHAIR: MIKE BROWN**

PRIORITY: Affordable Housing

Key Deliverables (Outcomes)	Baseline	Outputs	How do we know we are getting there?	Completion Date	Resource	Lead Partner	LAA Link	Progress to date April 2009	Status
New Affordable housing in Bromsgrove Town Centre	Number of units: 25 within actual town centre boundary although large sheltered scheme on the periphery.	New affordable Housing provided in the Town Centre	Issues and options Area Action Plan Consulted on	June 2008	£50K BDC budget	LSP BDC Planning Team Town Centre Theme Group	NI154 NI155	Complete	
			Potential for new housing supported in consultation response	August 2008				Process significantly delayed due to RSS and land assembly issues.	

**HOUSING HIGH LEVEL ACTION PLAN
THEME GROUP CHAIR: MIKE BROWN**

PRIORITY: Affordable Housing

Key Deliverables (Outcomes)	Baseline	Outputs	How do we know we are getting there?	Completion Date	Resource	Lead Partner	LAA Link	Progress to date April 2009	Status
			Preferred option Area Action Plan including capacity for new affordable housing	February 2009				Process significantly delayed due to RSS and land assembly issues.	
Affordable Housing on Longbridge Site (East Works)	No units	700 houses >35% affordable housing	Area Action Plan adopted Including allocations for affordable housing and part of final design outputs for site	January 2009	BDC Planning Team (£50k) LSP Housing Theme Group Planning Grant/Social Housing Grants	BDC Executive Director Partnerships and Projects	NI154 NI155	Complete	

**HOUSING HIGH LEVEL ACTION PLAN
THEME GROUP CHAIR: MIKE BROWN**

PRIORITY: Affordable Housing

Key Deliverables (Outcomes)	Baseline	Outputs	How do we know we are getting there?	Completion Date	Resource	Lead Partner	LAA Link	Progress to date April 2009	Status
			Planning applications approved for Longbridge East	May 2009	BDC Planning	BDC		Work is still ongoing.	
			Agreement reached between Authorities over distribution of affordable properties	Before first units completed	BDC Strategic Planning and Housing	BDC		Work is still ongoing.	

**COMPACT HIGH LEVEL ACTION PLAN
THEME GROUP CHAIR: PHIL STREET**

PRIORITY: Help, Advice and Signposting

Key Deliverables (Outcomes)	Baseline	Outputs	How do we know we are getting there?	Completion Date	Resource	Lead Partner	LAA Link	Progress to date March 2009	Status
Secure improved co-operation for joint working and information sharing between statutory and voluntary sectors	Number of VCS groups using the Customer Service Centre and signpost facilities	Secure VCS presence on a regular basis at the CSC and using the signpost facilities 4 times per year and maintain a programme of announcements re VCS activity on electronic noticeboard	VCS timetabled into CSC on a regular basis	31 st March 2009	BARN BDC	BARN	N/A	Completed.	
				31 st March 2010				No action at this time	
				31 st March 2011				No action at this time	
			31 st March 2009	Completed.					
			31 st March 2010	No action at this time					
			31 st March 2011	No action at this time					
		Announcements re VCS activity available on electronic noticeboard	31 st March 2009	Completed.					
			31 st March 2010	No action at this time					
			31 st March 2011	No action at this time					

**COMPACT HIGH LEVEL ACTION PLAN
THEME GROUP CHAIR: PHIL STREET**

PRIORITY: Joint Working and Development Opportunities

Key Deliverables (Outcomes)	Baseline	Outputs	How do we know we are getting there?	Completion Date	Resource	Lead Partner	LAA Link	Progress to date March 2009	Status
Comprehensive understanding of, and strengthened connections between statutory and VCS sectors in the District	Collect data on number of partners BDC is working with	Improved and strengthened relationships between BDC and VCS by increasing the number of partnership activities	Joint BDC/VCS event	17 th October 2008	BDC/BARN	BDC/BARN	N/A	Due to insufficient interest from voluntary sector organisations, this will not be pursued.	
			Increase number of partnership activities	31 st March 2009	BDC/BARN	BDC/BARN	N/A	Completed.	
				31 st March 2010	BDC/BARN	BDC/BARN	N/A	No action at this time	
				31 st March 2011	BDC/BARN	BDC/BARN	N/A	No action at this time	

**COMPACT HIGH LEVEL ACTION PLAN
THEME GROUP CHAIR: PHIL STREET**

PRIORITY: Volunteering

Key Deliverables (Outcomes)	Baseline	Outputs	How do we know we are getting there?	Completion Date	Resource	Lead Partner	LAA Link	Progress to date March 2009	Status
Extend opportunities and knowledge of volunteering in statutory sector	Collect information on voluntary work undertaken by BDC staff	Database produced and participation in National Volunteers' Week	Secure 15 BDC staff involved in National Volunteers' Week	30 th September 2008	BARN information database	BDC BARN	NI 2	A total of 26 BDC staff members participated in National Volunteers' Week in June 2009 which is an increase on 2008 when 20 staff members participated.	

**COMPACT HIGH LEVEL ACTION PLAN
THEME GROUP CHAIR: PHIL STREET**

PRIORITY: Volunteering

Key Deliverables (Outcomes)	Baseline	Outputs	How do we know we are getting there?	Completion Date	Resource	Lead Partner	LAA Link	Progress to date March 2009	Status
			Data collected annually on BDC staff involvement in volunteering	31 st March 2009	BDC	BDC	NI 2	Names of staff and organisations they volunteered for, has been collated. Feedback will also be collected as part of a 'lessons learnt' exercise. In March 2009, BDC have commenced compiling a qualifications database but survey results yet to be verified.	

**COMPACT HIGH LEVEL ACTION PLAN
THEME GROUP CHAIR: PHIL STREET**

PRIORITY: Volunteering

Key Deliverables (Outcomes)	Baseline	Outputs	How do we know we are getting there?	Completion Date	Resource	Lead Partner	LAA Link	Progress to date March 2009	Status
				31 st March 2010	BDC	BDC	NI 2	No action at this time	
				31 st March 2011	BDC	BDC	NI 2	No action at this time	
		Development of Volunteering Policy for BDC	Policy developed and in use	31 st March 2009	BDC	BDC	NI 2	A draft policy has been discussed by the group and a final draft, incorporating comments, will be circulated by the end of June 2009. It is anticipated that the policy will be in use by December 2009.	

**TRANSPORT HIGH LEVEL ACTION PLAN
THEME GROUP CHAIR: COUCILLOR MRS JILL DYER**

PRIORITY: Transport in the District (including Train Station and Community Transport)

Key Deliverables (Outcomes)	Baseline	Outputs	How do we know we are getting there?	Completion Date	Resource	Lead Partner	LAA Link	Progress to date March 2009	Status
Access to services and facilities by public transport, walking and cycling	Current Bromsgrove Train Station	Development of new purpose-built multi-modal interchange	Multi-modal interchange built	June 2009	Multi-agency funded	Network Rail	NI 175	The funding package secured but may not be sufficient to fund original design scope, so design is being looked at to reduce costs.	
	Existing rail service to Bromsgrove	Development of business case for extension of Cross City rail line to Bromsgrove	Business case developed	January 2011				This is a "committed" scheme for Network Rail by 2014	

**TRANSPORT HIGH LEVEL ACTION PLAN
THEME GROUP CHAIR: COUCILLOR MRS JILL DYER**

PRIORITY: Transport in the District (including Train Station and Community Transport)

Key Deliverables (Outcomes)	Baseline	Outputs	How do we know we are getting there?	Completion Date	Resource	Lead Partner	LAA Link	Progress to date March 2009	Status
		Electrification of line between Barnt Green and Bromsgrove	Electrification of line	January 2011				Letter received from Andrew Adonis confirming funding for electrification of line from Barnt Green to Bromsgrove. Will take place as part of work on train station.	
		Upgrade of signalling between Barnt Green and Bromsgrove						As above.	
Community Transport	Rural Rides but limited DDA compliance	Provision of 2 bus DDA compliant service	Budget approved	January 2009	BDC WCC	BDC	NI 175	Scheme went live on 21 September 2009.	

**TRANSPORT HIGH LEVEL ACTION PLAN
THEME GROUP CHAIR: COUCILLOR MRS JILL DYER**

PRIORITY: Transport in the District (including Train Station and Community Transport)

Key Deliverables (Outcomes)	Baseline	Outputs	How do we know we are getting there?	Completion Date	Resource	Lead Partner	LAA Link	Progress to date March 2009	Status
			Scheme live	June 2009. Sept 2009.	BDC WCC	BDC	NI 175	SLA in place. Buying mini-bus on 18 June.	
	Town Centre Shopmobility scheme	Review of Shopmobility opening hours	Town Centre Project Plan	31 st March 2010	BDC WCC	BDC		Open to 5pm as a result of review. Further review for Saturday opening planned for 2009/2010.	
Integrated Passenger Transport Strategy	Integrated Passenger Transport Strategy	Improved bus routes, buses and interchange	Agreement of Integrated Passenger Transport Strategy		WCC	WCC	NI 175	Marketing Strategy in place. Improved website launched. Infrastructure reviewed.	

**TRANSPORT HIGH LEVEL ACTION PLAN
THEME GROUP CHAIR: COUCILLOR MRS JILL DYER**

PRIORITY: Transport in the District (including Train Station and Community Transport)

Key Deliverables (Outcomes)	Baseline	Outputs	How do we know we are getting there?	Completion Date	Resource	Lead Partner	LAA Link	Progress to date March 2009	Status
			Review of the District's bus routes		WCC	WCC	NI 175	Accessibility study for town centre and Rubery now complete. This has identified need for town centre loop service which is expected as part of train station rebuild.	

**COMMUNITY ENGAGEMENT AND COMMUNICATIONS HIGH LEVEL ACTION PLAN
THEME GROUP CHAIR: HUGH BENNETT**

PRIORITY: Effective Community Engagement and Communication

Key Deliverables (Outcomes)	Baseline	Outputs	How do we know we are getting there?	Completion Date	Resource	Lead Partner	LAA Link	Progress to date March 2009	Status
% of those surveyed who feel they can influence the decision making process	Best Value Satisfaction Survey 31%	Public attendance and 85% of meetings attended by Senior Officers from BDC	Annual programme of PACT meetings	31 st March 2009	BDC	Police	NI 2	The Council achieved an outturn of 80%, which while missing the target is still a high level of support.	
				31 st March 2010					
		Three Area Committees convened	Terms of Reference and governance produced	31 st October 2008	£34,000	BDC	NI2	Terms of reference produced and consulted on.	

**COMMUNITY ENGAGEMENT AND COMMUNICATIONS HIGH LEVEL ACTION PLAN
THEME GROUP CHAIR: HUGH BENNETT**

PRIORITY: Effective Community Engagement and Communication

Key Deliverables (Outcomes)	Baseline	Outputs	How do we know we are getting there?	Completion Date	Resource	Lead Partner	LAA Link	Progress to date March 2009	Status
			Third committee to be set up	31 st October 2008	LSP Manager	BDC		Delayed due to staff vacancies; however, Hagley and Rural LNP to commence in the Autumn 2009.	
		Press coverage of Partnership	One press release per Board meeting	Bi-monthly	BDC Comms Team	BDC		Suspended.	
			Press release on Annual Report	October 2008	LSP Manager	BDC		Completed.	

**COMMUNITY ENGAGEMENT AND COMMUNICATIONS HIGH LEVEL ACTION PLAN
THEME GROUP CHAIR: HUGH BENNETT**

PRIORITY: Effective Community Engagement and Communication

Key Deliverables (Outcomes)	Baseline	Outputs	How do we know we are getting there?	Completion Date	Resource	Lead Partner	LAA Link	Progress to date March 2009	Status
Effective Communication	Parish Plans not currently seen by LSP	Agreed approach to "adoption" of Parish Plans	Parish Plans coming to LSP Board	31 st October 2008	LSP Manager	BDC	NI 4	Only 24% of Place Survey 2008-09 respondents feel able to influence decisions. Delayed due to staff vacancies; however this will be picked up in Autumn 2009.	
	Current Sustainable Community Strategy	Review Council's Sustainable Community Strategy, making links to partners	Updated Strategy approved at Cabinet	November 2008 Cabinet	LSP Manager	BDC		Completed and approved by Full Council in November 2008.	

Further Information

If you have any questions or would like any further information, please contact:

Della McCarthy
Senior Policy and Performance Officer / LSP Co-ordinator
Bromsgrove District Council
The Council House
Burcot Lane
Bromsgrove
B60 1AA
Tel: 01527 881618
Email: d.mccarthy@bromsgrove.gov.uk

If you require this document in large print, Braille, CD or audio tape please contact:

Customer Service Centre
Telephone: 01527 881288

Or e-mail worcestershirehub@bromsgrove.gov.uk



**This report can be provided
in large print, braille, CD, audio tape
and computer disc.**



**Bromsgrove
District Council**

www.bromsgrove.gov.uk



Corporate Communications, Policy and Performance

The Council House, Burcot Lane, Bromsgrove, Worcestershire B60 1AA

Main Switchboard: (01527) 881288, Fax: (01527) 881212, DX: 17279 Bromsgrove

Email: policy@bromsgrove.gov.uk